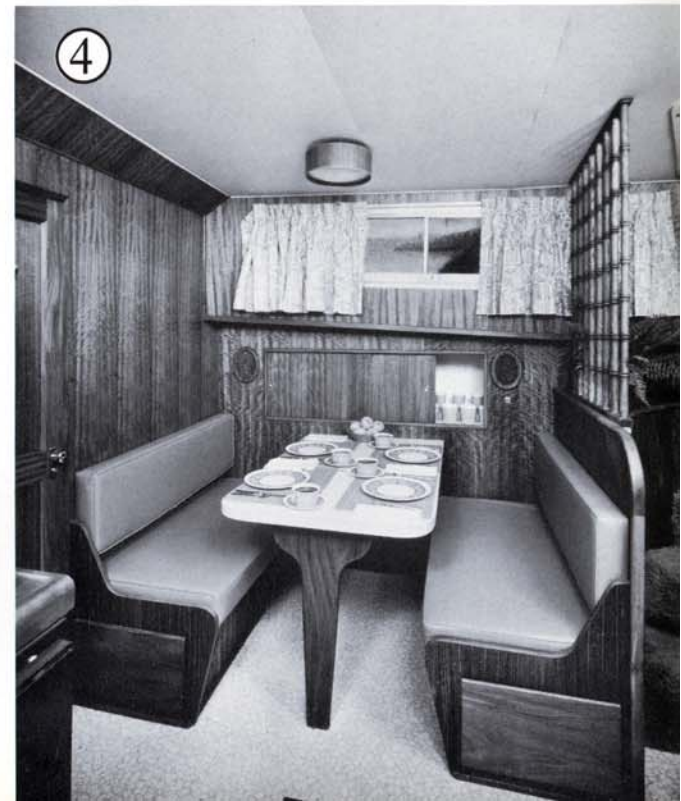
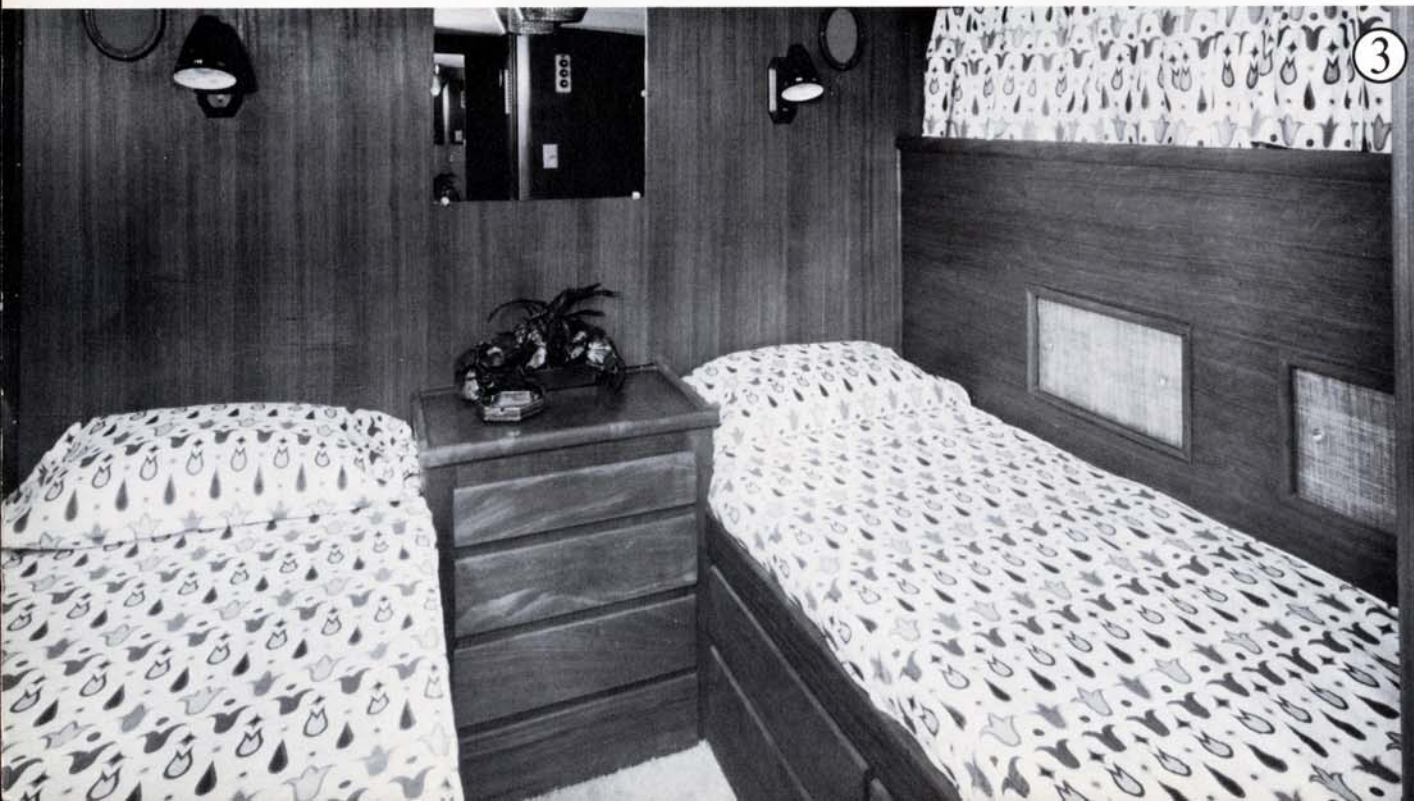
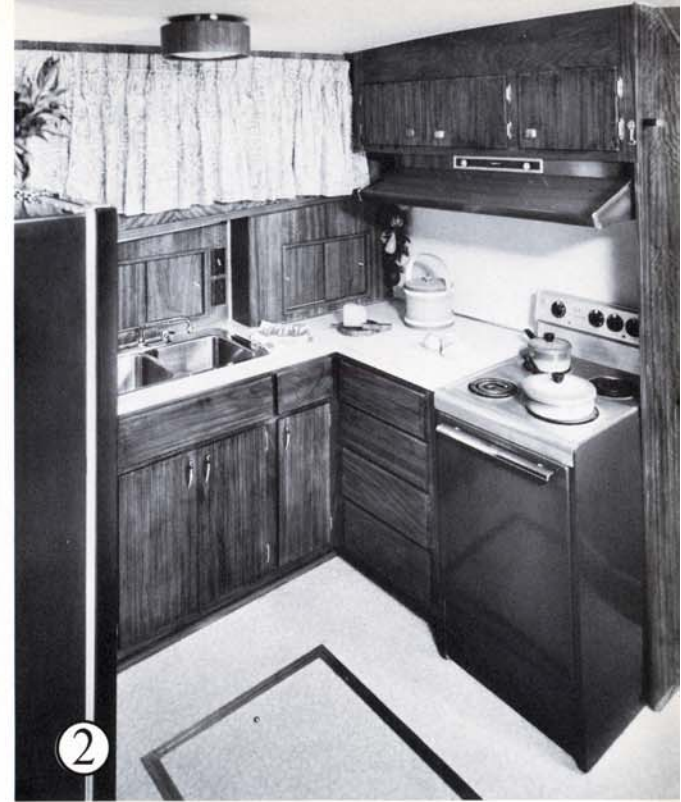


The fiberglass Hatteras 58 Yacht Fisherman







(Some items are optional)

1 This view, looking aft in the main salon, shows the spaciousness of the salon which is larger than most boats of this size. The optional sofa bed converts to sleep 2. There are two side entry doors. There are 4 duplex 110-volt outlets for accessories. The floor is carpeted. The windows are tinted safety glass. Head room is 6'4½". Standard equipment includes the bar with ice-maker and sink; a tape player with a stereo sound system piped throughout the boat; draperies; and a complete control station with a helmsman's seat.

2 The galley is equipped with a 220-volt 4-burner electric stove with oven and exhaust fan. There is a dishwasher and a disposal unit; Nutone food center; stainless steel double sink with hot and cold water pressure system. The 19 cu. ft. refrigerator has a freezer. High pressure laminate counter top. There is ample storage space in the counter drawers and storage cabinets. The screened sliding windows are draped. 110-volt duplex outlets; 110-volt and 32-volt light fixtures. Vinyl floor covering.

3 The guest stateroom has fore-and-aft twin beds with polyfoam mattresses; a built-in chest of drawers; hanging locker has automatic light. Draperied port lights. There are shelves with sliding panels in the outboard bulkhead. Hanging locker. A full length mirror. Decorator light and bed lights. Carpeted floor. Convenient entrance to head.

Not shown is the bow stateroom. It has upper and lower bunks. A built-in chest of drawers; a large hanging locker. And the spacious rope locker provides additional storage space. Vinyl floor covering; draperies on the screened port lights, and an overhead screened hatch. 110-volt duplex outlet; 32-volt and 110-volt lights. Private head and shower.

4 Opposite the galley is a dinette that seats 4. It can be converted to a bed. The table has a high pressure laminate top. There are drawers beneath the seats, as well as storage area in the outboard bulkhead. The sliding screened windows are draped.

Hatteras Yacht Division, North American Rockwell, High Point, N.C. reserves the right to make styling, design and construction changes without notice. Also, prices are subject to change without notice.

Master stateroom is spacious and beautiful. It has twin beds with drawers underneath and 7" polyfoam mattresses. A large built-in dresser and mirror with a window above that can be opened for an escape hatch to the aft deck. There is storage in both port and starboard bulkheads. Decorator lights and duplex 110-volt outlets for accessories. Screened port lights are draped. There is also a screened overhead hatch. There is a large walk-in hanging locker with louvered folding doors with automatic light. Private entrance to head.



You really have to see it to believe it—all the comforts of a well equipped Motor Yacht with the sporting aspects of fishing—deep water fishing. Long range, too—850 gallons of fuel.

The big cockpit has 84 sq. ft. of deck space—room enough for a fighting chair or 2 portable fishing chairs. Has a live bait well. Self bailing. Sea water washdown pump with hose. Hatches to lazarette. Window to master stateroom.

The aft deck is spacious with a safety rail; optional wing doors open on to side decks. With an optional weather cover this aft deck is a cozy area for lounging, entertaining or just viewing—a front row seat for watching deep sea fishing action.

Note the conveniently positioned ladder to the flybridge.



Hatteras Yacht Division
North American Rockwell