



You Get More Usable Space In This 41 Foot Double Cabin Hatteras.

The fact that the new 41 foot Hatteras Double Cabin has more usable space than popular 45 foot wood boats can be attributed to the designer.

It was designed for the true boat enthusiast to have every detail and every option to assure luxurious cruising and the pleasure of a home afloat.

When you first step on to the non-skid flush deck (10'6" x 12') you notice immediately the spaciousness. And when you step down into the main salon you will be excited by this large living and entertaining area (17'4" x 10'6"). There are 93 sq. ft. of window area. The large sliding windows have screens. Windshield opens for ventilation, also.

The Hatteras-41 Double Cabin is not only spacious but beautiful. It provides you with safety and stability . . . pleasure and excitement never before enjoyed in handling a boat such as this, plus the wonderful feeling that your maintenance worries are reduced to a minimum.



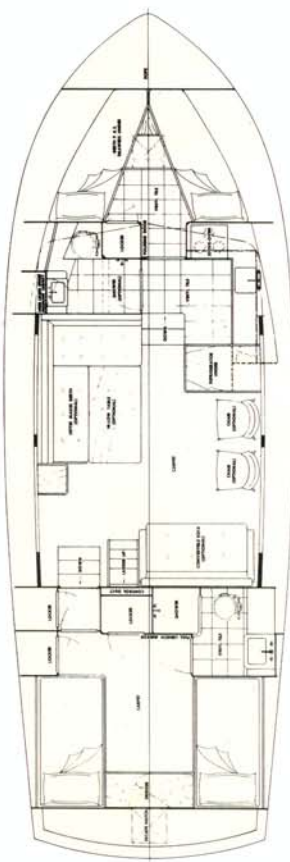
Full-width beam main salon has wall-to-wall carpeting. There are ample 12 volt and 110 volt outlets for lamps, radios, TV's or other accessories.

Stereo-sound record player is standard equipment on the Hatteras-41 Double Cabin. The salon chart deck and top of counter over the refrigerator are Formica. Access to engine room is through the hinged steps to galley, or through engine hatches in salon. There is tremendous storage space in the lighted engine room.

There's a vinyl headliner and a Philippine mahogany interior. The salon companionway to flush deck has a water-tight hatch. Large sliding windows are screened. Sofa bed and optional sectional lounge each sleeps two. There is plenty of shelf storage on port and starboard sides; and one hanging locker.



Master stateroom has ten-drawer, built-in dresser with hinged mirror which opens to lazarette and access to escape hatch. This area provides storage for suitcases, fenders, lines, etc. Built-in over-size beds have polyfoam mattresses and storage compartments over each bed. Three large hanging clothes lockers. Combination 12-v and 110-volt lamps. Numerous 110-volt outlets for extra lamps and accessories.



Efficient, compact but roomy galley is well-equipped with three-burner electric stove and oven, ten-cubic foot refrigerator with freezer; ample dish lockers, glass rack. Also, there is a roomy double cabinet, a special cabinet under the refrigerator, two cabinets beneath the windows and five drawers; stainless steel sink with hot and cold running water; exhaust blower over stove; four 110-volt outlets for appliances.



Optional bar and ice-maker replace four drawer end table.

Aft head and shower has lavatory, linen locker, water-proof wall and Vinyl deck. Large shower with hot and cold pressure water. Medicine cabinet with mirror, and two 110-volt outlets.

