

*Hatteras*

38 CONVERTIBLE





# The real beauty of the Hatteras





**38C is more than skin deep.**





Welcome to the inner beauty, and the inner strength, of the Hatteras 38 Convertible.

Low and lean on the horizon, yet roomy enough on the inside to accommodate a rangy 6-foot-plus sportsman. A quick, sleek fishing machine with the creature comforts of a two-stateroom cruiser.

In all, a performance convertible that lives up to the quality standards of Hatteras.

Performance from the 38C begins with twin gasoline or diesel engines which drive the constant



dead-rise, convex-vee Hatteras hull to a smooth lift. This hull shape is well suited to the displacement and balance characteristics of this 38' 10" machine. It tracks well into head seas, remains poised in following seas and bites into stable, maneuverable turns.

The gleaming exterior of the 38C is a tough gelcoat covered by a tougher polyurethane finish for lasting durability. Even accent stripes, non-skid areas, window frames and the built-in anchor pulpit are coated with polyurethane for less maintenance, for the harshest weather conditions. Below the waterline, the Hatteras standards call for the protection of a bonding agent and bottom paint as an added measure of quality assurance. Deck hardware is

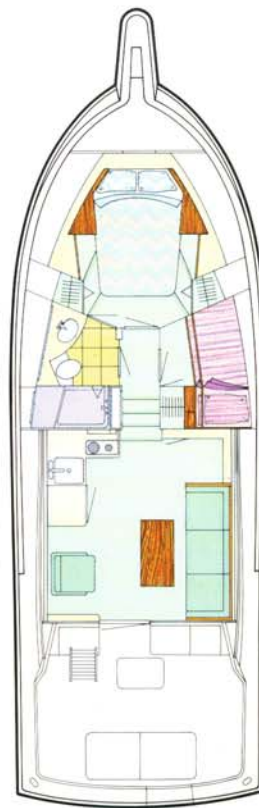
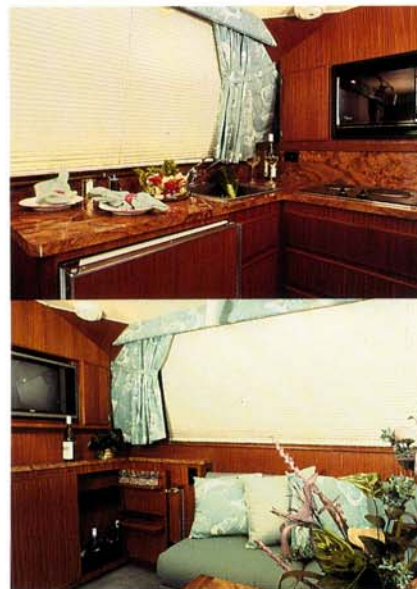
true "big boat" in scale. Stainless steel cleats, chocks, anti-chafing strips and welded, polished handrails characterize the Hatteras commitment to detail.

But, as we've noted, the real beauty of the 38C goes well beyond its skin.

A Hatteras hull is reinforced by a molded, all-fiberglass stringer system. Comprehensive engineering and precise tooling creates a rugged structure, without the need for a wood innercore and the dangers of rotting associated with wood. A Hatteras fiberglass stringer is strong from the inside out.

Molded-in steel plates secure the engine mounts to assure dissipation of torque loads along the stringers. Result: four strong backbones that are the core of its strength.

The cockpit of the 38C is a beautiful demonstration of space utilization. Here is all the space you and your crew need to bring home a



tournament winner. The cockpit area exceeds 100 square feet, including the standard molded-in bait center. The portside unit is designed for storage or can be fitted with an optional bait freezer. To starboard, the 38C bait center provides slide racks and drawers for tackle storage, a sink, bait prep area, and room for optional cockpit controls — all under contoured, smooth fiberglass lids.

Throughout, the cockpit is designed to accommodate action from all quarters — the transom door and gate arrangement is solid and large, the double-hatched access to the rudder stock and steering arms provides enough room for an optional drop-in fish box.

The stainless steel and teak ladder leads to the flybridge where command of the boat is equally well-planned. The helm seating on the flybridge is positioned for full-circle visibility, including down into the cockpit. From the helm chair, vital engine functions can be read at a glance. VDO gauges and tachometers are mounted into a wrap-around console unit with space for additional electronics at either side of the helm. Hatteras anticipates the owner's preference for a range of equipment with ergonomically designed mounting locations never more than an arm's reach away. Forward of the console, the flybridge provides a three-place lounge seat with access to storage areas. Sturdy stainless steel handrails all around provide extra security when moving about.



*All the room you need and more. The spacious cockpit is well-equipped with built-in lockers, tackle center, and transom door and gate. Access hatches in the one-piece molded sole are scuppered for drainage. The ladder is welded stainless steel.*

*Even the apparent little things mean a lot to us when we're building a Hatteras. Ground fault protected AC electrical outlets, transformer connected shorelines, battery paralleling system and a high-capacity generator.*

*The molded-in storage cabinet is available with an optional freezer or live bait well.*

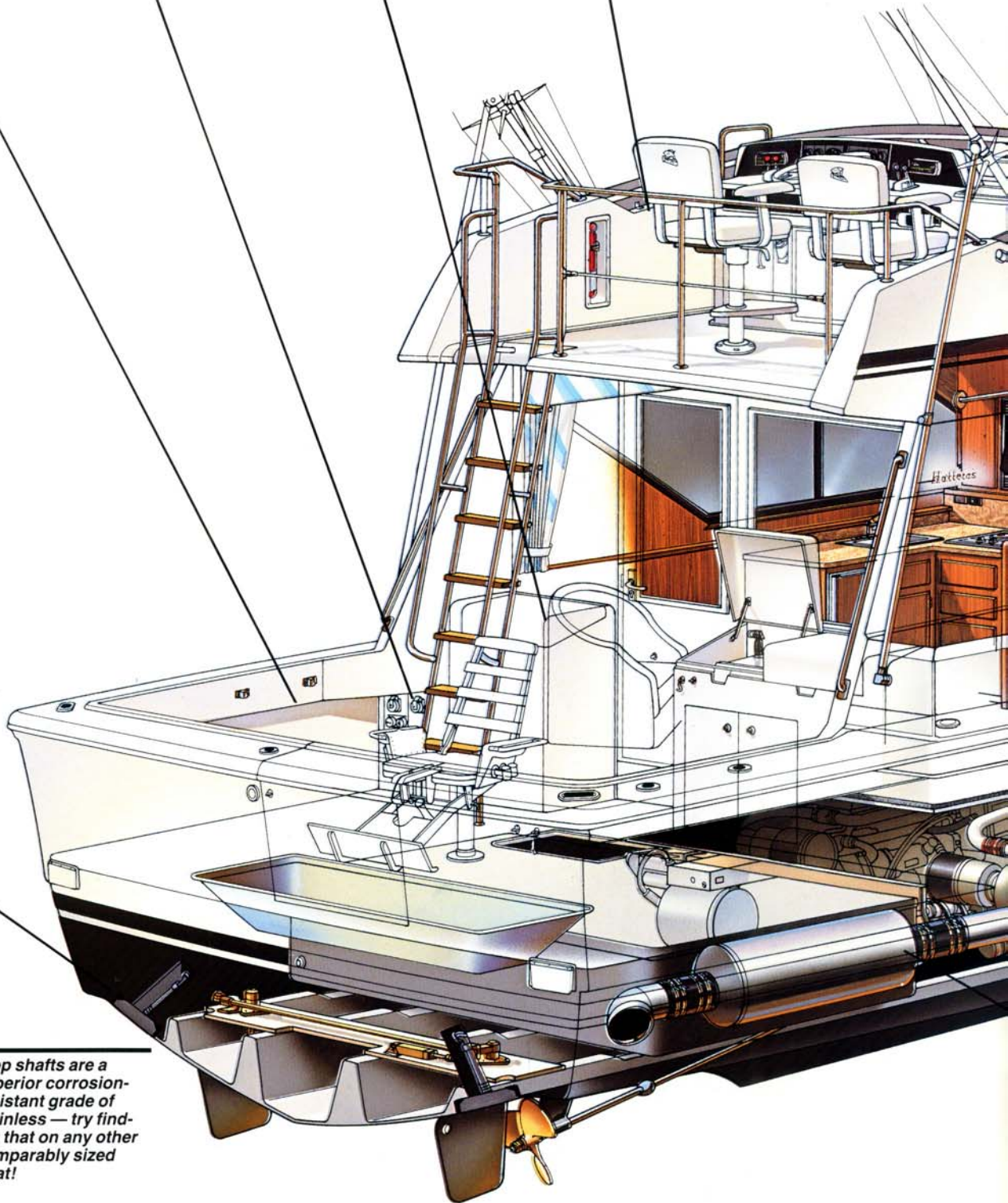
*Handsome and high visibility. The fly-bridge features contemporary styling without compromising function. Sight-lines are superb 360° around the boat, and down into the cockpit. And controls are all within an arm's reach.*

*Well-planned, spacious interiors — including plenty of head-room throughout including guest berths, sized for comfort — are a Hatteras hallmark.*

*Recessed trim tabs provide variable ride-tuning response to changing load and sea conditions.*

*Bronze struts are recess-mounted to minimize turbulence in the water stream. The steering system features heavy-duty hydraulics.*

*Prop shafts are a superior corrosion-resistant grade of stainless — try finding that on any other comparably sized boat!*





**Hatteras Monitor System** has audible and visual warnings for vital functions. The automatic Halon® fire control system includes a manual release at the helm.

The wrap-around acrylic wind screen also features a stainless steel grab bar.

An expanded copper screen laminated into the cabin top, provides a very effective S.S.B. radio antenna ground plane.

The large, ventilating salon windows are encased in rugged anodized and painted aluminum frames to stand up to years of salt spray.

Non-skid applied to all walking surfaces, helps keep secure footing even when wet. Sturdy stainless steel handrails and heavy deck hardware are designed for easy topside replacement.



The molded-in bow pulpit with anchor chute is standard.

The sign of a Hatteras hull — tested, refined, and proven to perform to our standards. Note the flared bow for spray deflection, and optimal keel for directional stability.

The hull is handlaid — made of solid fiberglass with a gelcoat finish, then further protected by polyurethane paint.

Engine exhaust is side deflected to reduce fumes and spray. A large volume muffler adds to quiet operation.

Hatteras computer-aided designs of molded fiberglass water, fuel, and holding tanks maximize space and ensure proper weight distribution.

Strong, all-fiberglass stringers spread engine, drivetrain and sea loads, and help minimize bottom deflection.

Diesel or gasoline engines have been specified for compatibility with the performance objectives of the 38C, as well as for their overall reliability and serviceability.

The planing surfaces feature just enough vee to stabilize the ride without compromising speed.





Below decks, the real beauty of the 38C is striking. Upon entering the salon, you'll quickly feel the quality of Hatteras-style proportions. Within its floor space of 80 square feet, under a headroom clearance of nearly six-and-a-half feet, the salon easily accommodates full-crew strategy sessions or days-end relaxing.



The standard sofa, hi-lo table, and side chair are all coordinated beautifully in designer fabrics. To port, a handsome galley lets you easily prepare everything from a quick snack to a full dinner. Plenty of work surface, refrigerator with freezer, a microwave oven, and two-burner cooktop utilize space efficiently. To starboard, the 38C salon features an entertainment center with color television, cassette deck and AM/FM

stereo receiver. Cabinet doors below the bar's serving counter open to reveal custom glass and bottle racks. And a built-in icemaker is conveniently located nearby.

The quarters forward of the salon maintain a clever balance between spaciousness and privacy. The two staterooms — the master (forward) and the guest (amidships), provide people-size berths and more-than-ample-size lockers and drawer space, without crowding their occupants. The large head is complete with wide, mirrored vanity, electric toilet, full-length dressing mirror, and roomy stall shower. For added convenience the head has direct access from the master stateroom.

The master stateroom itself features a queen-size tapered berth, nearly six-and-a-half feet long. The wardrobe space is exceptional: two full-sized hanging lockers with bi-fold doors, port and starboard nightstands forward, and four large drawers under the berth. Custom side cabinetry accommodates accessories such as an optional color television.

The master stateroom also includes a list of standard features worth noting, such as ventilating portlights port and starboard, a large screened overhead hatch, stereo speakers with volume control, and rope locker access.

The guest stateroom is well-



equipped. Efficient and comfortable, the stateroom offers big over/under berths — people-size — a full-size hanging locker, and nightstand. And access to the head is right across the companionway.

Throughout every inch of the Hatteras 38C, you'll find the little extras typical of every Hatteras; the stainless steel hardware, the renowned Hatteras electrical system with fused, transformer-connected shoreline inlets, the Hatteras Systems Monitor which senses vital machinery and equipment operation, an automatic Halon® fire extinguisher system in the engine room, and a hefty 8 kw diesel or 9 kw gasoline generator. An attention to detail is what separates Hatteras from every other builder in the world.

Visit your Hatteras dealer to see this convertible first-hand. There, you'll find all the information you need to appreciate the beauty of the Hatteras 38C.





Hatteras Yachts  
2100 Kivett Drive  
P.O. Box 2690  
High Point, North Carolina 27261 U.S.A.  
Telephone: (919) 889-6621

Hatteras Yachts reserves the right to make styling, design, equipment and construction changes without notice. Some items shown may be optional.  
Hatteras is a registered trademark of Genmar® Industries, Inc. © 1988 Hatteras Yachts, Division Genmar® Industries, Inc.

38C 20 488  
Printed in U.S.A.

