

**HATTERAS YACHTS**  

---

**60 CONVERTIBLE**



## 60 CONVERTIBLE

Starting with a completely new superstructure and one of the most striking profiles in the industry, the Hatteras 60 Convertible introduced a brand new design for the popular sportfishing convertible line. The aerodynamic, seamless look of the 60 Convertible contributes to the mythical quality for which Hatteras is known. Quick as a billfish, this beauty tracks sharply through calm and big rollers alike.

This three-stateroom sportfisherman features an elegant salon and dinette area designed for comfort and convenience. Standard features such as fluted wood valances with blinds, undercounter refrigerator/freezer units, four-burner cooktop and microwave/convection oven are only a few of the amenities found in the 60. Below, two of the three staterooms feature queen berths with storage and private heads. For those with larger families, a four-stateroom, three-head arrangement is also available.

The incredible 151 square-foot cockpit is primed for serious tournament action with bait and tackle center, drop-in bait freezer, rod holders, seawater and freshwater wash downs, flush in-deck storage box with macerator pump and a refrigerated compartment that doubles as a live well. The flying bridge of the 60 offers a standard open arrangement with top-loading drink box, rod storage in the forward locker and port seat, as well as a standard electronics package. An optional enclosed bridge is available, as is an optional interior stairwell from the salon to the action up top.

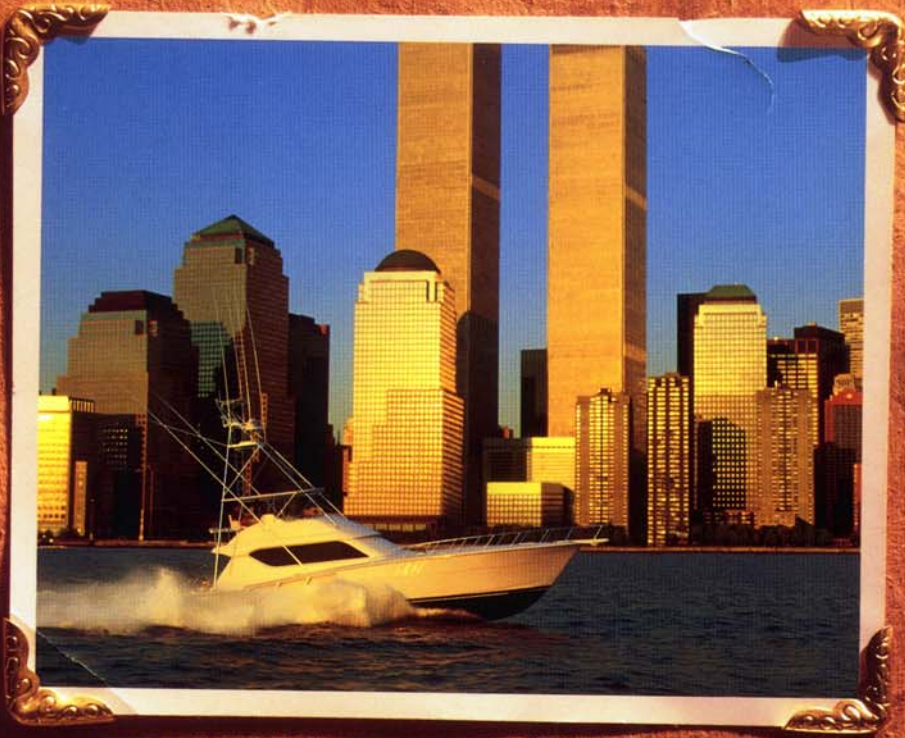
The 60 Convertible delivers all the luxury and convenience you can imagine. All to pamper your every moment spent outside of the fighting chair and to give you the upper hand every moment you are strapped in.



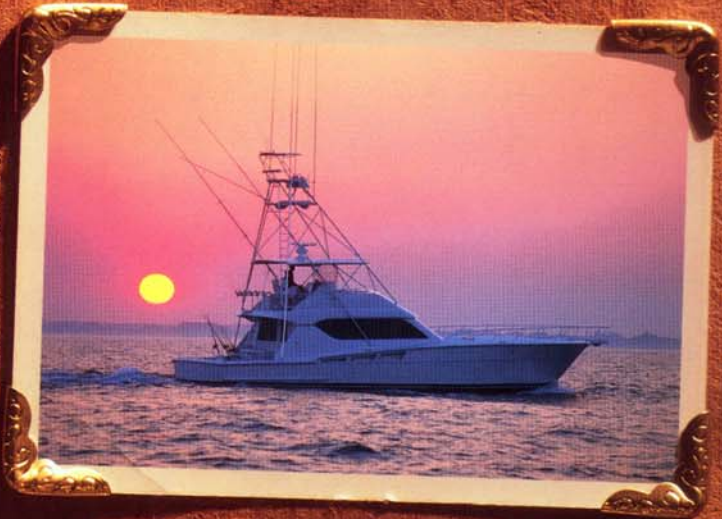


Early last August, my husband declared he had a surprise for our two best friends and me. He said to pack evening gowns and not much else. I called Kathie to see if she knew what we were doing. She didn't. By noon, we were aboard our Hatteras 60 with our friends running alongside. We headed from East Hampton and after a breathtaking cruise around the Statue of Liberty, we docked at Chelsea Pier. We were motored to Central Park where a romantic carriage ride awaited, followed by Opera in the Park. Afterwards, we strolled the Avenue of Americas before heading back for a late dinner prepared on board our Hatteras by people from Sardi's. We talked and laughed for hours with Rick and Kathie until the sunrise signaled us to bed. A two-day trip that was as magical as any you could find in the pages of a children's fairy tale.





*Kathie and Rick's  
Hatteras races past one  
of the most breathtaking  
backdrops in the world.  
(They enlarged and  
hung this snapshot as a  
center piece in their den.)*



*Best friends. Best  
of times, always!*



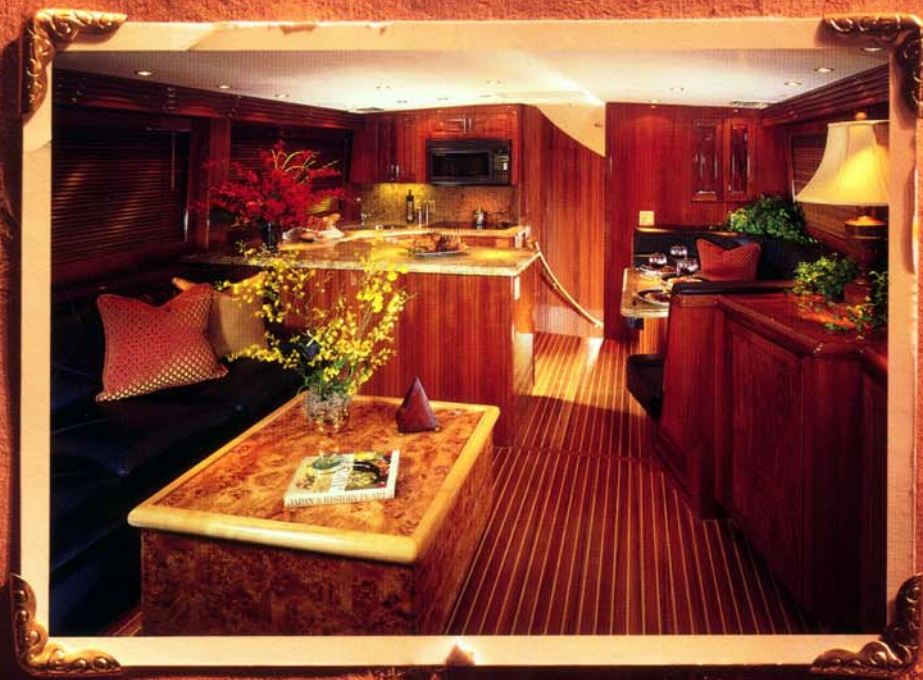


*The 60 Master Stateroom*



*The 60 Guest Head*





*The 60 Salon and Galley*



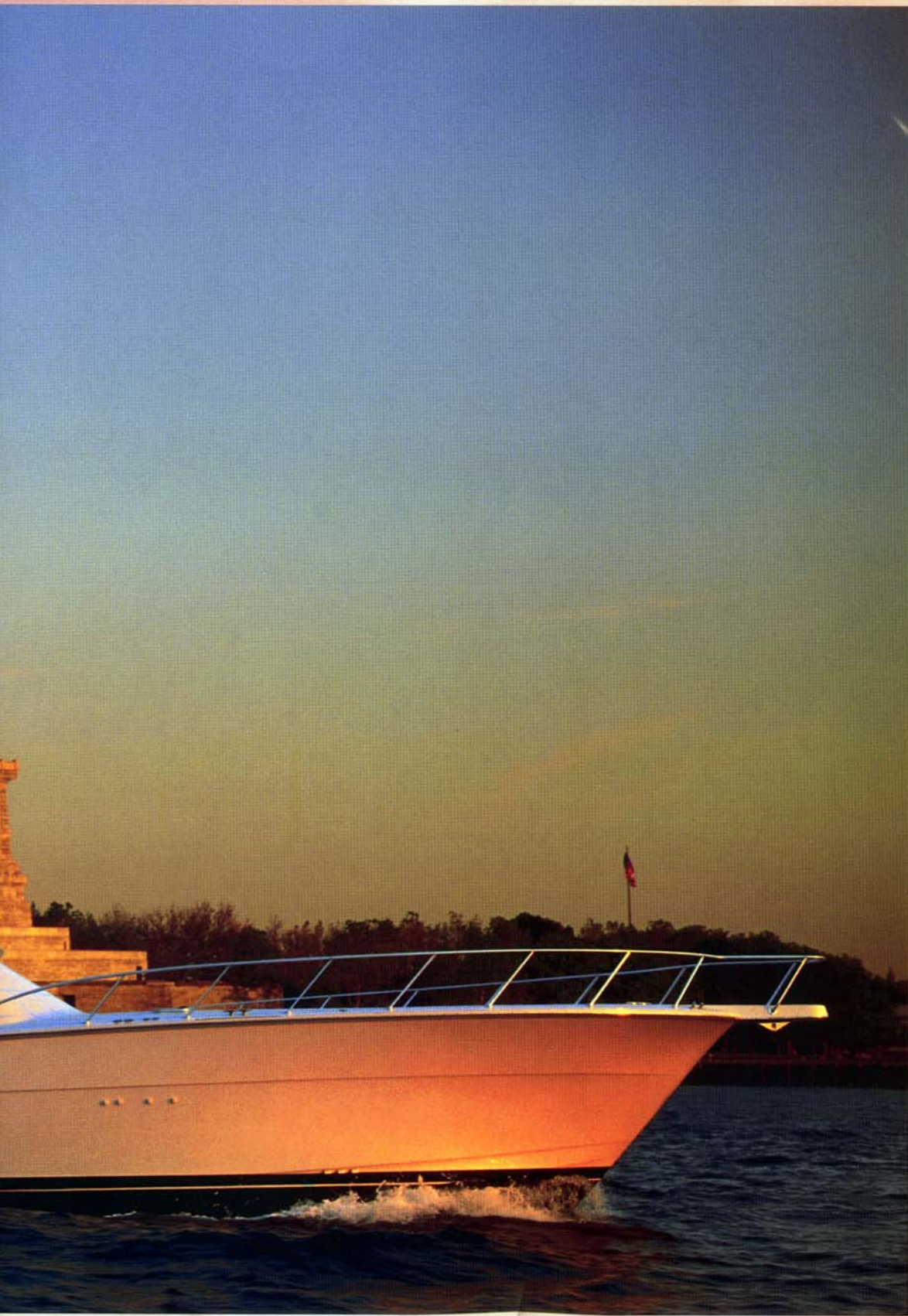
*The 60 Bow Stateroom*





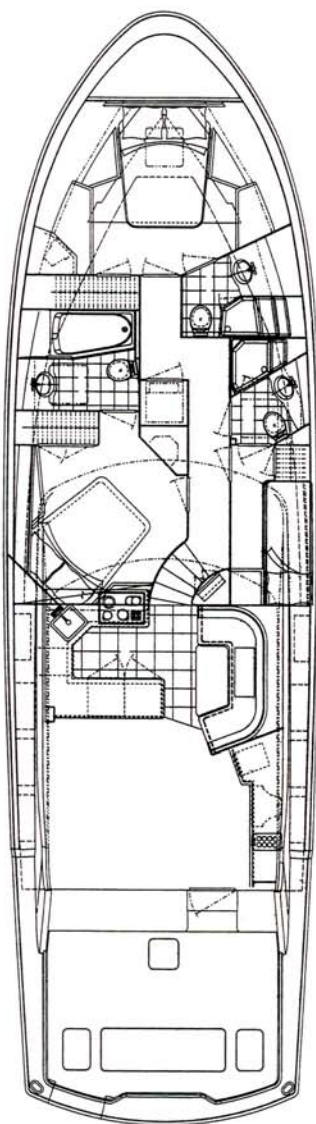


*The Hatteras 60 Convertible*

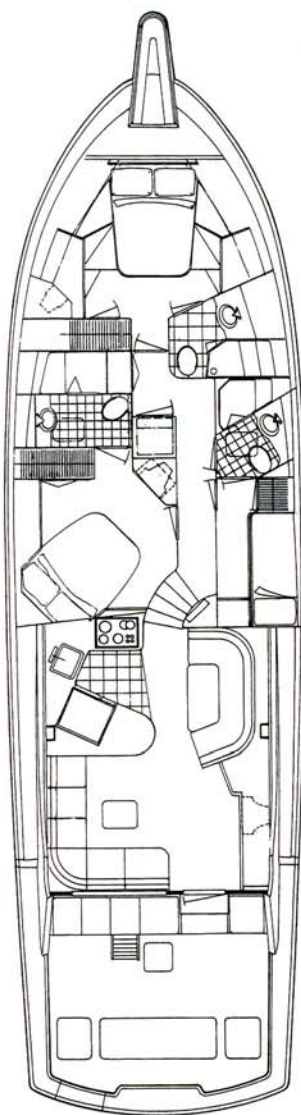




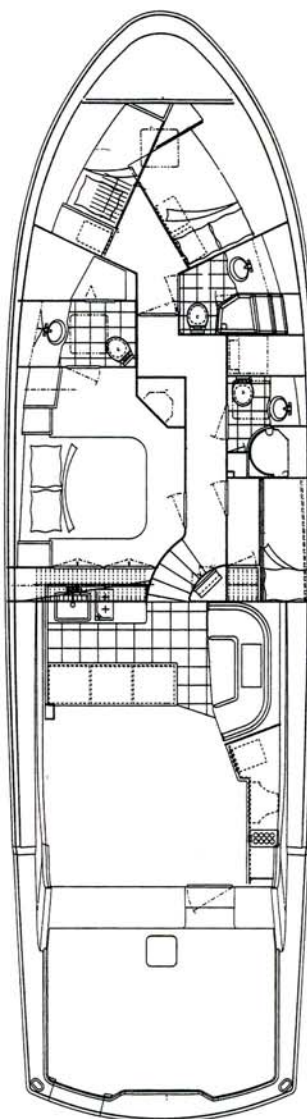
# 60 CONVERTIBLE



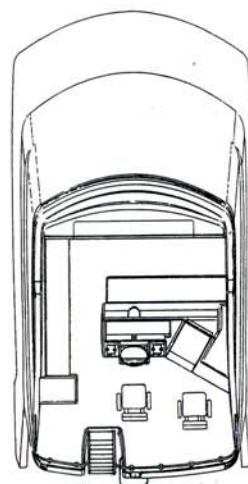
STANDARD  
ARRANGEMENT



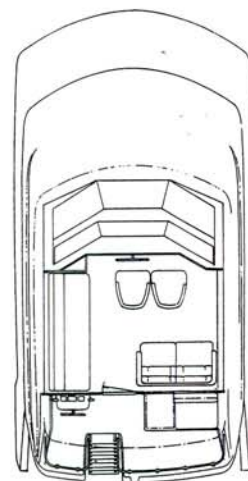
OPTIONAL GALLEY  
ARRANGEMENT



OPTIONAL ATHWARTSHIP  
MASTER STATEROOM  
OPTIONAL BOW STATEROOM  
OPTIONAL THREE  
UNDERCOUNTER  
REFRIGERATOR/FREEZER  
UNITS



STANDARD BRIDGE



OPTIONAL  
ENCLOSED BRIDGE

## SPECIFICATIONS

Length	60'2"	18.4 m
Beam	17'4"	5.28 m
Draft	6'0"	1.83 m
Fuel	1,622 gals	6,139 ltrs
Water	200 gals	757 ltrs

The 60 features a standard three stateroom arrangement. Two of the staterooms offer queen berths and each stateroom has its own private head. An optional four stateroom, three head layout is also available.