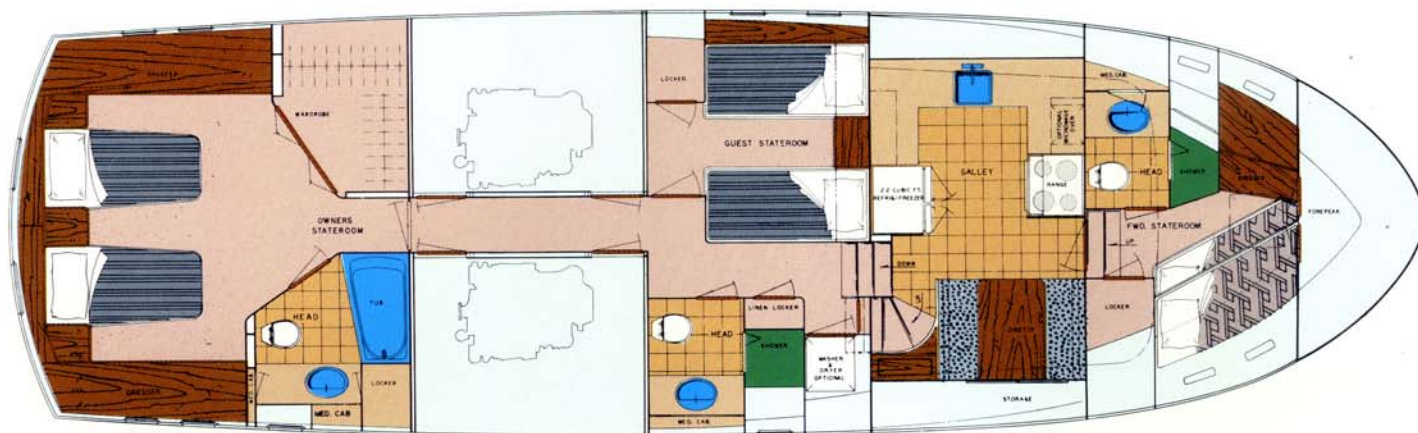


AMF

Hatteras

58 Motor Yacht

Twin Berths, Master Stateroom



The Hatteras 58 Motor Yacht is a fiberglass, modified-vee hull yacht designed by naval architect Jack Hargrave. Power is twin 650 SHP G.M. 8V-92TI diesels, and fuel capacity is 1,030 gallons.

In addition to three staterooms and three heads, the 58 Motor Yacht has a full galley with dinette, a salon with separate control station forward and a semi-enclosed aft deck.

The 58 Hatteras is designed with comfortable, yet luxurious entertaining and cruising accommodations—both indoors and out. The deckhouse measures 20' x 12', and with its large, tinted windows offers excellent visibility. The salon is separated from the full control station forward by a built-in helmsman and companion seat, along with a cabinet for a TV, stereo and VCR. Outboard of the

seat/entertainment center, an adjoining cabinet of lamp table height houses chart drawers and miscellaneous storage. The seat is upholstered in soft, leather-like vinyl.

The salon aft bulkhead is designed with a single door on the starboard side and a large window to port. This easily accommodates a variety of seating styles across the aft end and along the port side of the salon.

The salon's aft door leads to a large covered aft deck protected by wing doors and side windows. There is ladder access to the flying bridge, two fiberglass lounge seats with generous storage and a large wet bar featuring a household sized ice maker, plenty of glass and bottle storage and a large bulk storage area for reserve supplies.

Full side decks and side

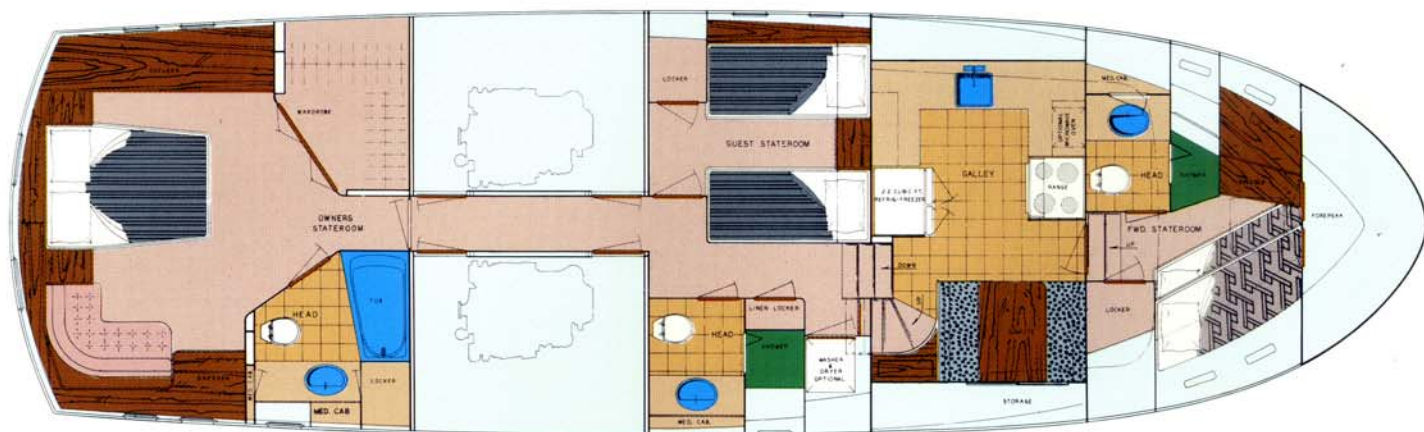
boarding gates are accessible from the salon side doors, and the aft deck wing doors.

Below decks, the 58 Motor Yacht includes a private master stateroom and head aft, while forward is a guest stateroom with head, and a galley with dinette. The forward and aft areas are separated by a companionway between twin walk-in engine rooms.

Aft, the sumptuous master stateroom features a queen bed, dressers, nightstand, vanity and walk-in, cedar-lined closet. Twin berths are optionally available in place of the queen bed. The private head has a tub with shower and several linen storage areas. The master stateroom also features a built-in lounge area, which provides the owner or his companion a place to relax or read in the privacy of their own cabin.

58 Motor Yacht

Queen Berth, Master Stateroom



The complete bow stateroom features over and under berths to starboard. There is a full length hanging locker and, to port, a dresser with drawer storage. The private head is convenient for day use, and also includes a stall shower.

The galley is fully-equipped with a side-by-side refrigerator/freezer with ice maker, four-burner range with eye-level oven, dishwasher, built-in food blender, and garbage disposal. There are ample food and dish lockers and laminate counter tops.

To starboard, conveniently located a few steps from the food preparation area is a dinette for four with upholstered seats and storage under.

The midship guest stateroom has twin berths with a nightstand between and full hanging locker. Storage drawers are

located under each berth and in the nightstand. The head has a separate stall shower.

The 58 model reflects the latest in Hatteras interior design. For example, in the master stateroom, behind the L-shaped lounge is a burl, high-pressure laminate-covered counter. Outboard of this area is a built-in bookcase.

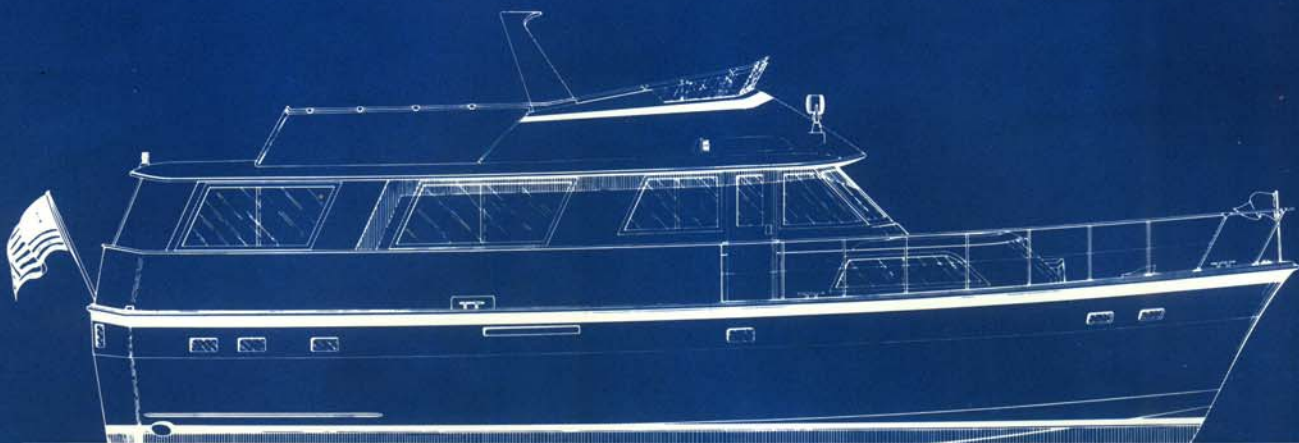
A continuous drapery extends around the aft portion of the master stateroom from wardrobe to toilet room, creating a flowing contemporary look, which is enhanced by the use of molded, round corners on the toilet room and wardrobe bulkheads.

A large cedar-lined walk-in wardrobe offers spacious bulk and hanging storage. Lavatory cabinet interiors are lined with durable high-pressure laminate. Toilet room floor covering is

vinyl tile, with an extra thick, long wear, colored layer. All toilet rooms are air conditioned.

In the galley, the cabinets and dinette table are covered with an almond colored HPL. Teak trim is installed along the edge on the countertop. Almond-colored nylon handles are used on the doors, and finger pulls have been cut in the bottom edge of the drawer faces. The entire galley/dinette area has new vinyl floor covering with durable fiberglass fabric base.

The Hatteras 58 features a long list of standard equipment such as a 20KW freshwater-cooled generator; a unique monitoring system for high bilge water, engine and marine gear functions and discharge of the automatic fire extinguishing system; transformer connected 240 volt, 50 amp shorelines; and a quiet, efficient air conditioning/heating system.



HATTERAS 58 MOTOR YACHT

SPECIFICATIONS

Length Overall	58'9"
Beam	18'2"
Draft	4'11"
Freeboard Forward	8'10"
Freeboard Aft	6'4"
Headroom Most Areas	6'7"
Fresh Water Capacity	350 Gals
Fuel Capacity	1,030 Gals
Weight Displacement	79,000 Lbs
Height Above Waterline to Top of Flying Bridge Windshield	18'10"
Twin G.M. 8V-92TI Diesel Engines	

AMF

Hatteras Yachts

High Point, North Carolina 27261 U.S.A.

58MY 5 285

Printed in U.S.A.

AMF Hatteras Yachts reserves the right to make styling design, equipment and construction changes without notice. Also, prices are subject to changes without notice. Some items shown may be optional.
Hatteras is a registered trademark of AMF Incorporated © 1985 AMF Incorporated