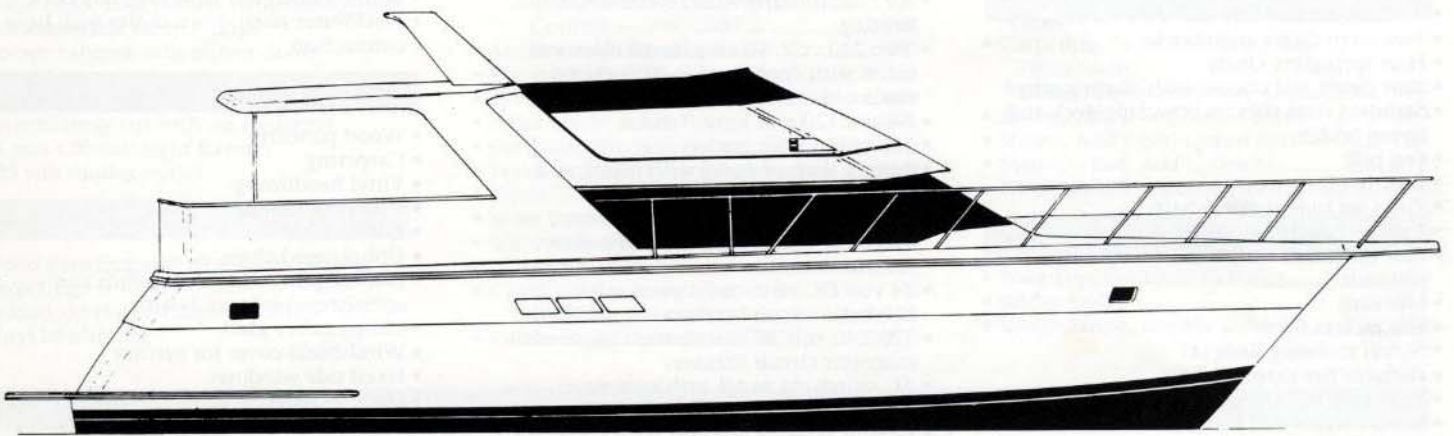


Hatteras

50 SPORT DECK MOTOR YACHT



50 SPORT DECK MOTOR YACHT^(A) Specifications

Length Overall ^(B)	50'10".....	15.49 m	Fuel Capacity ^(C)	622 Gals.....	2,354 ltr
Beam.....	16'0".....	4.88 m	Weight Displacement ^(C)	60,000 Lbs.....	27,216 kg
Draft ^(C)	5'6".....	1.68 m	Height Above Waterline to		
Freeboard Forward ^(C)	6'11".....	2.11 m	• Top of Flying Bridge ^(C)	14'2".....	4.32 m
Freeboard Aft ^(C)	5'10".....	1.78 m	• Top of Arch ^(C)	16'9".....	5.11 m
Headroom Most Areas.....	6'6".....	1.98 m	Twin D.D. 6V-92TA Diesel Engines 535 SHP		
Freshwater Capacity ^(C)	170 Gals.....	645 ltr			

STANDARD EQUIPMENT^(A)

Exterior Finish

- Isophthalic gelcoat, interior layer, grey
- Isophthalic gelcoat, exterior layer, white
- Blister-resistant Vinyl Ester resin in hull plus Vinyl Ester gelcoat below waterline
- Topsides and superstructure, Dupont Imron polyurethane coating
- Epoxy/copper based anti-fouling bottom paint
- Boot stripe, Dupont Imron polyurethane coating
- Decks, non-skid surface, Dupont Imron polyurethane paint with polymeric beads

Hardware and Miscellaneous

- All hardware chrome on brass or stainless steel
- Swim platform with reboarding ladder
- Fiberglass pulpit with stainless steel anchor chute and roller
- Anchor, anchor line and deck hawse pipe
- Two stern cleats and chocks
- Four springline cleats
- Bow cleats and chocks with chafing strips
- Stainless steel rails on bow, side-deck and flying bridge
- Fog bell
- Boat hook
- Zincs on rudders and shafts
- Dual air/electric horn
- Bow and stern staffs with ensign and pennant
- Life ring
- Life jackets (8)
- Nylon mooring lines (4)
- Portable fire extinguishers
- Trim tabs with zincs
- Bronze struts and elastomeric strut bearings
- Bronze rudders
- Five-blade propellers
- Prop puller
- 2³/₄" stainless steel propeller shafts

Engine Compartment and Bilge

- 24 volt enclosed lights
- 24 volt bilge blowers
- Twin diesel, freshwater-cooled main engines with marine gears, neutral interlocks, hour meters, alternators, fuel filters, seawater strainers and exhaust silencers
- 15kW freshwater-cooled diesel generator^(D) with seawater strainer, remote start, hour meter, water lift muffler and sound enclosure
- Fixed fire extinguishing system for engine compartment with automatic and remote manual controls, plus audible and visual discharge signals
- Pressurized freshwater system with 20-gallon electric water heater
- Water fill hose for engines and generator
- Dockside water connection with pressure-reducing valve

- Three automatic, electric bilge pumps
- Ball-valves on all underwater through hull fittings with electrical bonding throughout
- U.L. approved fiberglass reinforced fuel tanks
- Sewage holding tank plumbed for dockside discharge, with level indicator light in head
- Fuel filter/water separator, generator
- Fuel filters/water separators, engines
- Fuel tank selector manifold with gauges at instrument panel
- Engine Synchronizer

Electrical Systems

- Two 24 volt banks of heavy duty, 12 volt marine batteries
- 240 volt automatic battery charger, 60 Hz
- Battery paralleling system with switch at control console
- Transformer connected shoreline inlets
- Air conditioning with reverse-cycle heating
- Two 240 volt, 50 amp, fused electrical inlets with cords, one each port and starboard
- 24 and 120 volt light fixtures
- 120 volt duplex outlets
- Battery control panel with fusing and isolation switches
- 24 volt DC distribution panel with magnetic circuit breakers and battery condition meter
- 24 volt DC electronics panel with magnetic circuit breakers
- 120/240 volt AC distribution panel with magnetic circuit breakers
- AC switching panel with volt meter, ammeter, and interlock selector breakers
- 6-Point systems monitor with visual and audible signals for: (a) engines — oil pressure, coolant temperature, drive oil temperature, exhaust temperature, (b) high bilge water, (c) fire warning in engine compartment, (d) engine compartment fire extinguishing system discharge, (e) AC power loss
- Ground fault protection on AC receptacles and lighting circuits
- Navigation lights
- SSB radio ground screen laminated in cabin top
- Telephone/CATV inlet

Flying Bridge

- Molded fiberglass
- Bench seat with vinyl-covered polyfoam cushions
- L-shaped lounge with vinyl-covered polyfoam cushions and storage below
- Stainless steel rails and stanchions
- Tinted acrylic windshield
- Control station with all necessary switches and dimmable lighted instruments
- Two recessed electronics boxes in console with plexiglass weathershields

- Compass with dimmable light
- Fuel level gauge
- Dual lever clutch and throttle controls
- Hydraulic steering
- Helmseat, adjustable
- Sliding hatch and door to aft deck
- 24 volt DC receptacle

Aft Deck

- Molded fiberglass
- Wing doors
- High pressure laminate dodger boards
- Teak rails with stainless steel stanchions
- Hardtop with radar arch
- Steps to flying bridge
- Molded-in stairs to sport deck
- Fiberglass storage console
- Door to deckhouse
- Overhead light

Sport Deck

- Molded fiberglass with non-skid deck
- Freshwater wash down outlet with hose connection

Deckhouse — Salon

- Wood paneling
- Carpeting
- Vinyl headlining
- U-shaped lounge
- Coffee table
- Upholstered chair
- Lambrequins with mini blinds and upholstered valance boards
- Tinted safety glass
- Windshield cover for privacy
- Fixed side windows
- Door to aft deck
- Entertainment center including 20" TV with omni-directional antenna, AM/FM stereo receiver, with CD player
- Telephone outlet
- Solid surface countertops
- Steps to galley/dinette
- 24 and 120 volt light fixtures
- 120 volt duplex outlets

Galley/Dinette

- Wood paneling
- Vinyl tile flooring
- Vinyl headlining
- Solid surface countertops with integral sink and storage cabinets made of finished wood
- Water level gauge
- 120 volt refrigerator/freezer
- 240 volt, two-burner cooktop
- Microwave/convection oven
- Dinette, with storage drawers, converts to berth
- Storage outboard of dinette
- Washer/dryer
- 24 and 120 volt light fixtures
- Lighting soffits
- 120 volt duplex outlets
- Engine compartment access through hinged companionway stairs

Master Stateroom

- Wood paneling
- Carpeting
- Vinyl headlining
- Ventilating portlight with screen
- Large portlight in transom
- Lambrequins with pleated shades and upholstered valance boards
- Tapered queen berth with upholstered headboard, lighting soffit overhead
- Polyfoam mattress, spread, pillows, pillow shams, mattress pad and sheets^(E)
- Nightstands with storage compartments and high pressure laminate countertops
- Walk-in hanging locker with door and automatic lights
- Full-length mirror
- His & her dressers with drawers
- Private access to head
- AM/FM stereo receiver with CD player
- 13" color TV with MATV outlet
- 24 and 120 volt light fixtures
- 120 volt duplex outlets

Master Head and Guest Head

- Vinyl tile flooring
- Vinyl headlining
- Base cabinet with storage
- Solid surface countertop with integral sink
- Vinyl wallcovering
- Master head, tub with shower, sliding door and automatic sump pump
- Guest head, stall shower with sliding door and automatic sump pump
- Storage cabinet with mirror doors
- Towel bar
- Vacu-flush toilet
- Recirculating fan with air freshener
- 24 and 120 volt light fixtures
- 120 volt duplex outlet

Bow Guest Stateroom

- Wood paneling and vinyl wallcovering
- Carpeting
- Padded vinyl covering on hullside
- Vinyl headlining

- Tapered queen berth with upholstered headboard, lighting soffit overhead, and storage drawers underneath
- Polyfoam mattress, spread, pillows, pillow shams, mattress pad and sheets^(E)
- Rope storage locker
- Hanging locker with door and automatic light, starboard
- Linen locker, port
- Built-in dressers, port and starboard
- Screened overhead hatch
- Nightstands, port and starboard
- 24 and 120 volt light fixtures
- 120 volt duplex outlets
- Stereo speakers with volume control
- Full-length mirror
- Private access to head

OPTIONAL EQUIPMENT^(A)

Base Options

- Aft Deck Bar with Ice Maker^(F) 2,170
- Guest Stateroom in lieu of Standard Dinette^{(F)(G)} P.O.R.
- L-Shaped Dinette, Salon^{(F)(H)} P.O.R.
- Engine Room Detail Package^{(F)(I)} 2,795
- Cradle, Heavy Duty 7,420
- Water Delivery Kit^(J) 1,740

Mechanical and Miscellaneous Equipment

- Windlass:
 - Maxwell VC-1200 5,160
 - Maxwell VW-2200^(K) 8,495
 - Additional Windlass Switch Control — VW-2200 390
- Anchor, with Chocks, Extra 900
- Dunnage Box, Fiberglass 1,860
- Sea Ladder with Storage Brackets 1,410
- Helm Chair, Add'l. ^(F) 895
- Oil Changing System 1,450
- Wash Down, Freshwater, Foredeck 800
- Wash Down, Seawater, One Outlet .. 2,135
- Spare Propellers, D.D. 6V-92TA^(L) P.O.R.
- Spare Prop Shaft, 1 Piece, D.D. 6V-92TA^(L) 3,325
- Combination Intercom/Telephone System^(M) 2,555
- Rudder Angle Indicator, VDO 1,070

Canvas

- Bimini Top, Folding with Boot 3,525
- Flying Bridge Enclosure, 4 Sides 4,910
- Flying Bridge Cover 1,575
- Flying Bridge Instrument Cover 275
- Flying Bridge Helmseat Cover (each) .. 210
- Flying Bridge Lounge Cover 1,270
- Aft Deck Enclosure 3,420

Electrical and Appliances^(I)

- 13" TV, Bow Stateroom 1,725
- TV, Multi-standard (in lieu of standard) P.O.R.
- VCR, Salon^(N) 720
- VCR, Multi-standard^(N) P.O.R.
- Ice Maker, Salon 1,310
- Air Conditioning with Reverse-Cycle Heat, Aft Deck^(O) 6,155
- Garbage Disposal 730
- Dishwasher 1,630
- Telephone Outlet, Add'l., (each) 375
- TV Outlet, Add'l., (each) 495
- Receptacle, Weatherproof, 120V 410
- European Conversion Package, 220v/50Hz P.O.R.
- Retractable Shore Cord, 240v/50a, Single (Starboard Only) 4,115
- Searchlight, Hand-held, 6" 380
- Searchlight, Remote-Controlled 3,390
- Docking Lights, Bow (pair) 2,035
- Docking Light Switches, Add'l., (each) 400

Decor and Furnishing

- Carpeting, Non-Standard Areas
 - Head (each) 255
 - Galley/Companionway 960
- Sheets, Add'l. Set, Single Berth^(E) 100
- Sheets, Add'l. Set, Queen Berth^(E) 135
- Mattress Pad, Add'l., (each) 110
- Pillow, Add'l., Dacron Filled 35

Paint^(I)

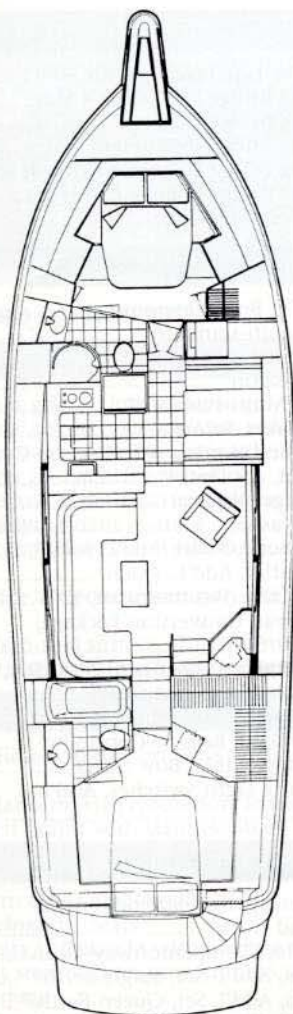
- Boot Top, Optional Color 390
- Bridge Stripe 685
- Bridge Stripe, Double Colors 1,230

NOTES TO SPECIFICATIONS AND EQUIPMENT

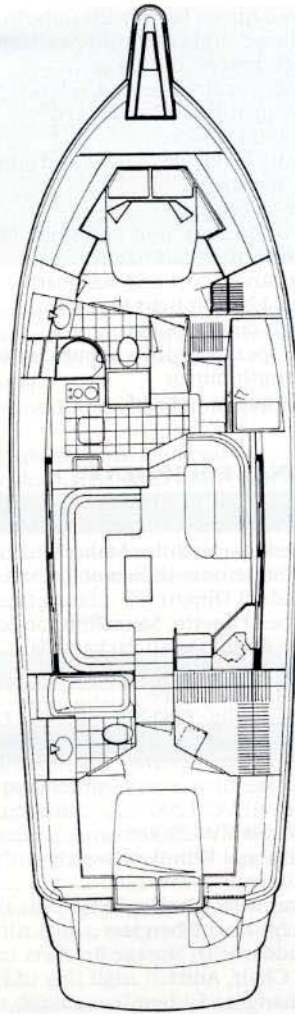
- (A) Right is reserved to make changes at any time, without notice, in prices, material, specifications and equipment. Orders are accepted subject to prices prevailing at time of shipment. Orders requesting any material and/or equipment which differs from that selected by Hatteras as standard or optional for this model will be considered a custom change and will require additional charges. Prices shown for many options may apply only if ordered prior to start of production. Once production begins, orders for such options may require additional charges due to non-standard installation requirements and/or lead times. In order to show equipment size and location, line drawing may include some optional items. Specifications, standard equipment and optional equipment effective with boats sold at August 1, 1996, through July 31, 1997, Hatteras Base Prices.
- (B) Length overall does not include the swim platform or bow pulpit.
- (C) Weight, draft, freeboard and height are based on an estimate of model's displacement with largest engines available. Weight is estimated with fuel,

- holding and freshwater tanks half filled. Draft and freeboard are estimated with all tanks filled. Heights are estimated with all tanks empty. Actual figures will vary depending on production tolerances, equipment, supplies and stores on board, as well as operational and sea conditions. Capacities of tanks are estimated to be total capacity of all tanks normally furnished in this model. Usable capacities will vary depending upon conditions.
- (D) Generator is not intended to supply power for all standard and optional accessories. Load must be limited to generator output rating.
- (E) One set of sheets includes: one bottom sheet, one top sheet, pillowcase(s).
- (F) Option must be ordered prior to start of production. Price shown reflects cost of scheduled installation requirements. A late request for this option will require an additional charge.
- (G) The forward guest stateroom option includes a "combo" washer/dryer unit located below the hanging lockers and opens into the companionway.
- (H) Available only with optional forward guest stateroom.

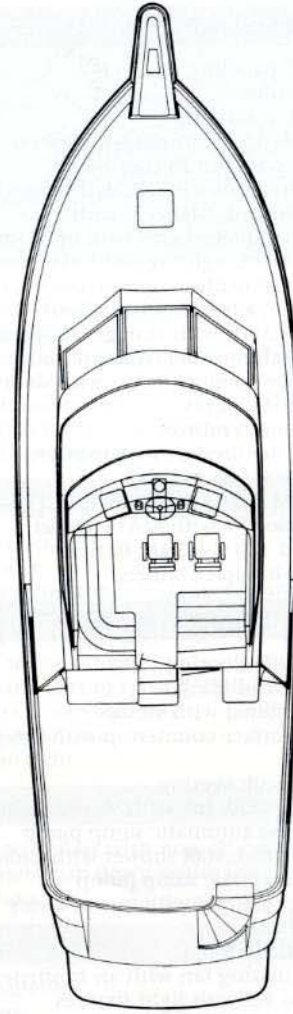
- (I) Option specifics: cosmetic layer of fiberglass mat, painted white Awlgrip; dripless shaft and rudder seals; painted rudder shelf and white wire trays. In lieu of standard: Aeroquip fuel and steering lines; external high-speed sea water strainers on engines; fuel transfer system and fluorescent lighting.
- (J) Includes 2 qts A.T. fluid, 1 case oil, assortment of screws, bulbs and fuses, deck mop and brush, bucket, hose, nozzle, 3 fenders, 1 set filters, belts, impellers and solenoids for main engines, 1 set of filters and impellers for generator.
- (K) This model for use with chain and includes 300 ft. of 1/4" Acculoy chain.
- (L) Storage location and installation not included.
- (M) Optional telephone outlets will also be required.
- (N) Depending upon component(s) selected, cabinet may require modification; however, modification may not accommodate all components offered.
- (O) Includes 240 volt, 50 amp fused electrical inlet with cord.



STANDARD ARRANGEMENT



OPTIONAL ARRANGEMENT



BRIDGE

HATTERAS LIMITED WARRANTY

1. THERE ARE NO EXPRESS WARRANTIES ON PRODUCTS MANUFACTURED BY HATTERAS YACHTS, EXCEPT THAT The Company will, through its selling Dealer, replace or repair, at the Company's option, any part (except as hereinafter provided) which is proven to its satisfaction to have been defective at the time of delivery to the first owner, and which defect is discovered within twelve months from the date of delivery to the first owner, if the part is returned, transportation prepaid, within thirty days after the defect is discovered, to the Dealer or to such other point of manufacture as the Company may designate.

In addition, the Company will, through its selling dealer, repair any hull which is proven to its satisfaction to have been defective at the time of delivery to its first owner and which defect is discovered and reported within (5) years from the date of delivery to the first owner.

2. This warranty shall not apply to:
 - (a) The cost of removal or reinstallation of part, or disassembly or reassembly of the unit of which it is a component.
 - (b) Varnishes, gelcoats, paints, fabrics, chromium plated and stainless steel finishes, because of the varying effect resulting from different climatic and use conditions.
 - (c) Products not of the Company's manufacture. Any warranty provided by the manufacturer will be passed on to the owner if possible.
 - (d) The installation of any equipment by a Dealer or other installer.
 - (e) Racing boats or engines.
 - (f) Speeds, fuel consumption and other performance characteristics because they are estimated and not guaranteed.
 - (g) Conditions resulting from misuse, abuse, negligence, alteration or lack of performance of normal maintenance.
 - (h) Others than the first owner.
 - (i) Boats that are used in commercial, charter, or military activities.
3. THE WARRANTY PROVISIONS SET FORTH ABOVE ARE EXCLUSIVE AND ARE IN LIEU OF, AND COMPANY DISCLAIMS, ANY AND ALL OTHER WARRANTIES, EXPRESS, IMPLIED OR STATUTORY, WHATSOEVER INCLUDING, WITHOUT LIMITATION, ANY IMPLIED WARRANTIES UNDER THE UNIFORM COMMERCIAL CODE, ANY IMPLIED WARRANTY OF MERCHANTABILITY AND ANY IMPLIED WARRANTY OF FITNESS FOR A PARTICULAR PURPOSE. THE REPLACEMENT OR REPAIR OF DEFECTIVE PARTS AS STATED ABOVE IN THIS WARRANTY SHALL BE THE SOLE AND EXCLUSIVE REMEDY OF ANY PERSON AND SHALL BE THE SOLE LIABILITY OF THE DEALER AND THE COMPANY UNDER THIS WARRANTY AND ANY IMPLIED WARRANTIES WHICH ARE NOT DISCLAIMED HEREIN. THE COMPANY OR ITS DEALER SHALL NOT BE LIABLE UNDER ANY CIRCUMSTANCES FOR LOSS OF TIME, INCONVENIENCE, LOSS OF USE, OR FOR ANY OTHER INCIDENTAL, SPECIAL, CONSEQUENTIAL OR INDIRECT DAMAGES.

Some states do not allow limitations on implied warranties or in the exclusion of incidental or consequential damages, so the above limitation on the exclusion of implied warranties and exclusion on incidental and consequential damages may not apply.

4. THIS WARRANTY IS EXPRESSLY IN LIEU OF ANY NON-CONTRACTUAL LIABILITIES, INCLUDING PRODUCT LIABILITIES BASED UPON NEGLIGENCE OR STRICT LIABILITY.
5. THE DEALER IS NOT THE AGENT OF HATTERAS YACHTS. The Company does not authorize the Dealer, or any other person, to assume for the Company any liability in connection herewith or any liability or expense incurred in the repairing of its products other than those expressly authorized herein. THE DEALER MAY NOT EXTEND, OR IN ANY WAY CHANGE OR AMEND, THIS EXPRESS WARRANTY.
6. The Company reserves the right to improve its products through changes in design or material without being obligated to incorporate such changes in products of prior manufacture.
7. You may secure performance of warranty obligations hereunder by:
 - (a) Oral or written communication with the Hatteras Dealer from which you purchased the boat, making an appointment to have the Dealer examine your Hatteras boat.
 - (b) Delivering your Hatteras boat to the selling Hatteras Dealer for his examination.
 - (c) In certain cases the Dealer is authorized to complete Hatteras Limited Warranty obligations unilaterally, and in others he must receive authorization from the Hatteras Service Department. The Dealer is obliged to follow whichever course is appropriate.
 - (d) Upon completion of Hatteras Limited Warranty obligations, the Dealer will notify you of the availability of your Hatteras boat for your pickup.
 - (e) Major mechanical components, such as engines, generator sets, electronics, appliances, and air conditioning, for example, are warranted by the manufacturer of the component. They have authorized service dealers in most major boating markets. Your Hatteras Dealer will identify such service dealers upon request.
8. Any other communications necessary in connection with this warranty should be sent to the following address:

HATTERAS YACHTS
Attention: Director of Service
2100 Kivett Drive P.O. Box 2690
High Point, North Carolina 27261
9. THIS WARRANTY GIVES YOU SPECIFIC LEGAL RIGHTS, AND YOU MAY ALSO HAVE OTHER RIGHTS WHICH VARY FROM STATE TO STATE.

Hatteras[®]
The World's Premier Yacht Builder

Hatteras Yachts
2100 Kivett Drive, P.O. Box 2690
High Point, NC 27261 U.S.A.
(910) 889-6621
Fax (910) 889-4257
e-mail: mkt@hyachts.com