

*Hatteras*

---

50 CONVERTIBLE



**A POWERFUL ARGUMENT  
FOR REFUSING TO  
COMPROMISE.**



The minute we introduced the remarkable Hatteras 50 Convertible, just about every other sportfishing boat maker was anxious to compare it to their boats.

That happens a lot when you're the leader.

But the minute you see this super-performing, three stateroom, tournament fishing machine, you're going to understand why there just isn't any comparison.

The design is a head-turner. The Hatteras 50

Convertible is striking and sleek, with a rakish stem and sweeping sheer. It's a beautiful example of well-integrated naval architecture.

The renowned Hatteras hull, as you would expect, is a modified-V design for a more stable ride in all sea conditions, with a double chine for dryer running in heavy seas. Hatteras knows you're going to be out there when the weather turns ugly. That's the real test of a beautiful boat.

The big, all new flybridge offers walk-around,



**ALL WE ASK IS  
THAT YOU COMPARE IT.  
BUT WITH WHAT?**



sit-around space for everyone. The console is huge and ready for a load of electronics. The bridgeside is higher for more comfortable seating, the helm is carefully positioned for visibility forward and below, and there's storage for rods and equipment beneath two lounges. Also note the new wraparound windshield with molded-in wind-deflector.



As for the cockpit, it's enough to give even the most experienced tournament fisherman goose bumps. It's 135 square feet, with sculptured, molded-in bait and tackle center, storage tubs and removable fish box in the sole, and a transom door with a coaming gate. And another plus that Hatteras pioneered on convertibles: direct access to the engine room! There's also room for a circulating baitwell and a place for cockpit controls to be neatly tucked away. This one's for the *real world*!





With thirty years' experience, finding ways to incorporate big-cruiser luxury and convenience into sportfishing machines is in our genes.

The salon itself is wonderfully spacious and with the open salon-galley-dinette, the result is an expanse that makes you wonder how we did it. (The answer: meticulous space planning.) The standard interior is light ash wood, with a contemporary translucent finish we call "pearlescence."

You'll find soft, indirect lighting . . . stylishly

upholstered valances, mini-blinds, lambrequins, fore and aft headliners . . . a standard furniture package that includes an L-shaped lounge, coffee table, and a built-in entertainment center . . . everything for today's casual lifestyle. Because to Hatteras, anything less than everything isn't anything worth doing.

The galley and dinette are also well-lit and spacious, a magnet to your family and fishing crew. Recessed, custom-designed lighting highlights the island cabinet design that includes a large, marble-



**ONCE AGAIN, HATTERAS  
MAKES A BIG THING OUT OF  
EVERYTHING.**



textured work counter; European-styled sink; and color-coordinated, two-burner cooktop. There's an under-counter refrigerator and freezer, microwave-convection oven, and garbage disposal — all designer-white, all standard.

The dinette is across, with a comfortable wrap-around L-shaped lounge. And we even have a galley-down option for you: with the galley located to port, in lieu of one stateroom, so you can enjoy an even more expansive salon with the big-boat layout of

two queen-berth staterooms.

You're starting to understand why we said this 50 is beyond comparison!

Below decks, the Hatteras 50 awaits you and your guests with three staterooms, two heads, and the kind of comfort and luxury that's made Hatteras so admired.

To starboard of a wide companionway, the master stateroom incorporates a real understanding of the most important element there is: You.



*The Hatteras 50 isn't just a revolution, it's a revelation. Every detail is carefully worked out, from the cooking convenience in the galley (top) to the sense of space in the open salon-galley-dinette arrangement (below, looking aft).*

*Salon looking forward. Just forward of the dinette, the built-in entertainment center includes a remote-control 20" television and AM/FM stereo cassette tape player.*



We know that after a day of fighting fish, your 50 Convertible should become your comfort and your refuge. That's why we've made sure there's appropriate luxury, and for a Hatteras owner, "appropriate" is another way of saying "a lot"! There's a walk-around queen berth, with three storage drawers beneath. A nightstand and nightstand-height cabinet. Full-length hanging locker, and room to add a built-in TV. A mirrored bulkhead creates a relaxing, open feeling of even more space, and the careful

lighting not only illuminates, it *enhances* the contemporary design. The cabinetry, the woodworking — everywhere you look, absolute craftsmanship.

The private master head features molded, marble-texture countertops and a Hatteras-size stall shower.

Across the companionway is the port guest stateroom, designed to make the best use of every inch of space, with 6'6" upper and lower berths, hanging locker with storage shelves, and private



**HATTERAS ACCOMMODATIONS  
DO MORE THAN JUST  
ACCOMMODATE YOU.**

*The Master Stateroom.  
Everything is designed for  
your comfort, including space  
to stretch out in . . . without  
sacrificing the practicalities.*



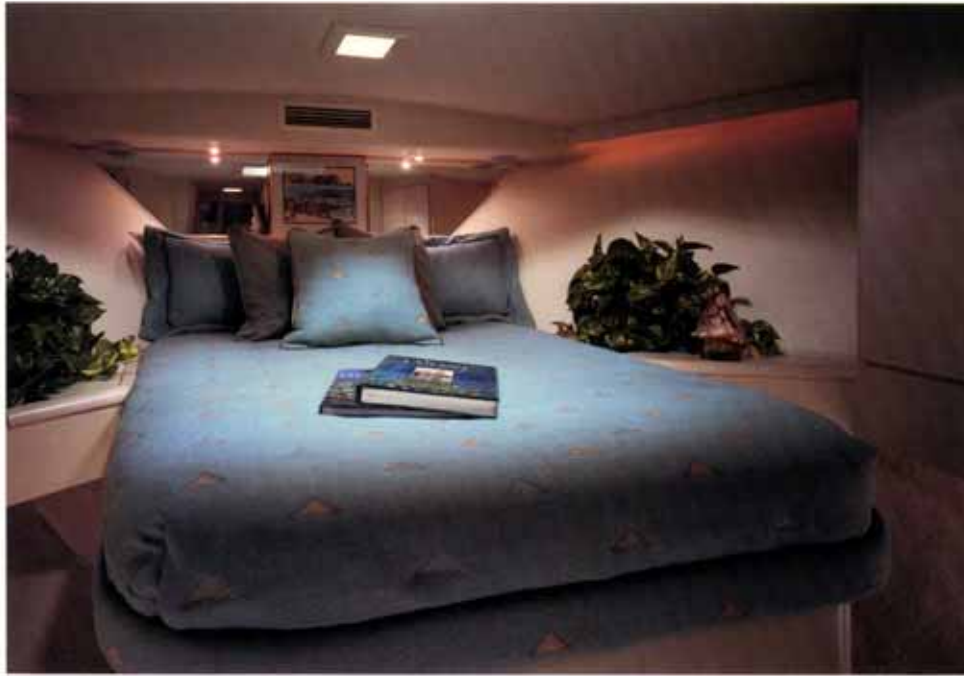
access to the portside head.

As for the bow stateroom, suffice to say that you'll like it so much you just might make it your master stateroom! Again, a walk-around queen berth, twin nightstands, twin storage cabinets with shelves, and his-and-hers hanging lockers. (And we didn't forget the storage beneath the berth, or the luxurious styling of a mirrored bulkhead and soffit lighting.)

If you prefer, we can offer you a bow stateroom

arrangement with upper/lower twin berths, for a large fishing party (or your crew of kids).

The portside head features a molded-in sink and large stall shower, and is designed to be either accessed privately from the bow stateroom, or for use as a day head. The standard washer/dryer is located in the companionway. We know what Hatteras owners are looking for. Everything!



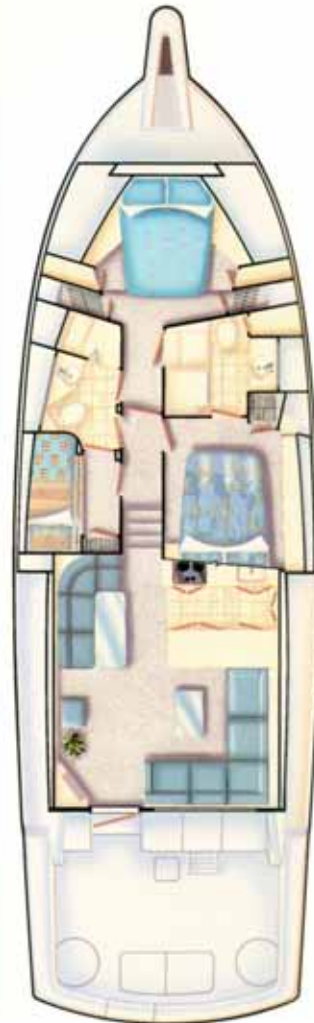
***The Bow Stateroom.***  
***It's bound to make your guests feel like part of the family.***  
***The royal family!***



***Portside Stateroom offers your crew upper and lower bunks that are honestly people-sized, with good, thick mattresses and other Hatteras-quality details like standard spreads and pillow shams.***



***The Master Head. All the conveniences of home — your home at sea. Surprised to find a head like this in a 50? Remember, this is a Hatteras!***



***Standard Lower-deck Floor Plan. Is this a high-performance luxury boat, or a high-luxury performance boat? It's both.***





The Hatteras 50 Convertible is tournament class — and tournament-ready for optimum performance with a variety of power options:

Detroit Diesel 8V-92TA engines rated at 720 shp; or Detroit Diesel 12V-71TA package rated at 870 shp; or 10 cylinder M.A.N. Diesel engines with a shaft-horsepower rating of 780 each.

And because it's a Hatteras, it's *all* Hatteras. You get the proven mechanical and electrical systems, the solid construction, and the careful craftsmanship that Hatteras is so well known for the world over.

The Hatteras 50 Convertible. The more you try to compare it . . . the more you'll realize, nothing compares to it!

# Hatteras

Hatteras Yachts  
2100 Kivett Drive  
P.O. Box 2690  
High Point, North Carolina 27261 U.S.A.  
Telephone: (919) 889-6621

Hatteras Yachts reserves the right to make styling, design, equipment and construction changes without notice. Some items shown may be optional or customer supplied. Hatteras is a registered trademark of Genmar® Industries, Inc.

© 1990 Hatteras Yachts, Division Genmar® Industries, Inc.  
50C 20M 1290 Printed in the U.S.A.