



## Hatteras 44 Triple Cabin with extended hard top, and wing doors

The 44 Triple Cabin is receiving even greater response than when first introduced.

An extended hard top with wing doors and a flying bridge are available as an option. This provides excellent protection for the large aft deck. A plastic weather enclosure is available to form another lounging and entertainment area in any weather.

Another option accommodates a galley in the deckhouse on the starboard side with an under-counter refrigerator and freezer. There is the regular three burner electric stove, sink and an ice cube maker. This arrangement makes it possible to build a small stateroom with upper and lower berths, below in the normal galley area.

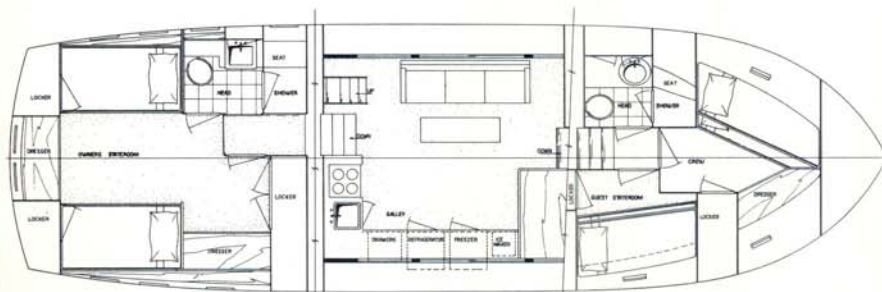




The master stateroom aft can be enlarged by replacing the smaller aft stateroom with a spacious dressing area that has a built-in vanity and a large, full-length locker with folding doors. A light in the locker turns on as you open the door.



## Hatteras 44 Triple Cabin's Alternate Arrangement has Luxurious Innovations



(Some items optional)

Hatteras Yacht Division, North American Rockwell, High Point, North Carolina reserves the right to make styling, design and construction changes without notice. Also, prices are subject to change without notice.

All 44 Triple Cabins are now being built with upper and lower berths in the bow stateroom which have replaced the vee berths, providing more usable space. This change permits the installation of a stall shower in the forward head.



**Hatteras Yacht Division**  
North American Rockwell