

The Fiberglass Hatteras 43 Double Cabin





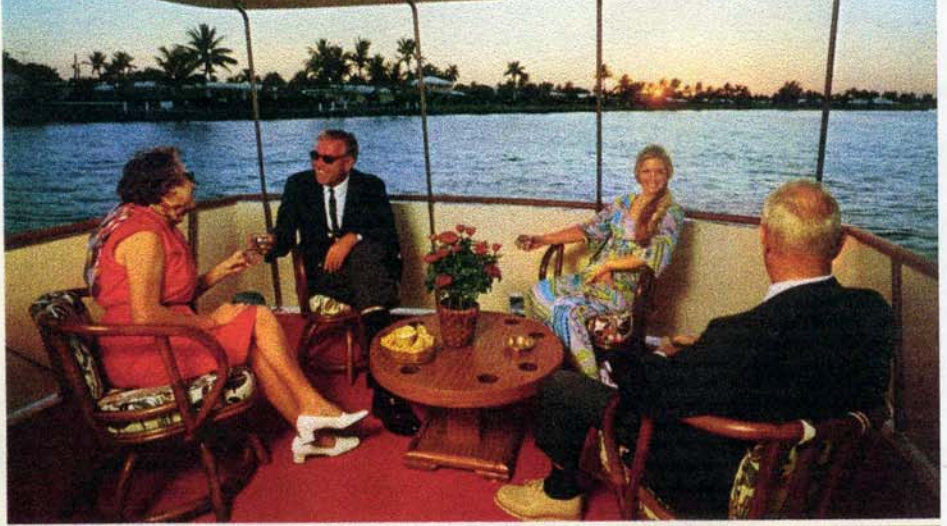
Control station on the bridge deck has excellent weather protection and full range viewing. Ventilating windshield is power operated. Complete instrument panel, dual controls, 5" Constellation compass, positive foolproof hydraulic steering. Handy switches for engines, lights, windshield wipers and levelers. Large chart deck. Adjustable helmsman's seat. (Note view of salon down companionway.)



The spaciousness of the interior of this 43 Double Cabin is evidenced by the photographs in this spread. It gives this yacht a feeling of bigness, of a much larger yacht. The warm, comfortable arrangement creates a living room atmosphere. The wide companionways add to this feeling. In the view looking forward you can see a section of the galley and up the companionway to the guest stateroom. In the view looking aft you can see through the companionway to the master stateroom.

The sliding windows are screened, both port and starboard, and afford generous light and excellent viewing. Ample storage space in lockers in forward bulkhead

Aft deck with extended hard top is a fine place for lounging, sightseeing and entertaining. With an optional plastic covering around the stern you can use this deck as an additional room in any weather. It also provides seating for the skipper's companions. Readily accessible by the companionway to the main salon. Carpet is optional.



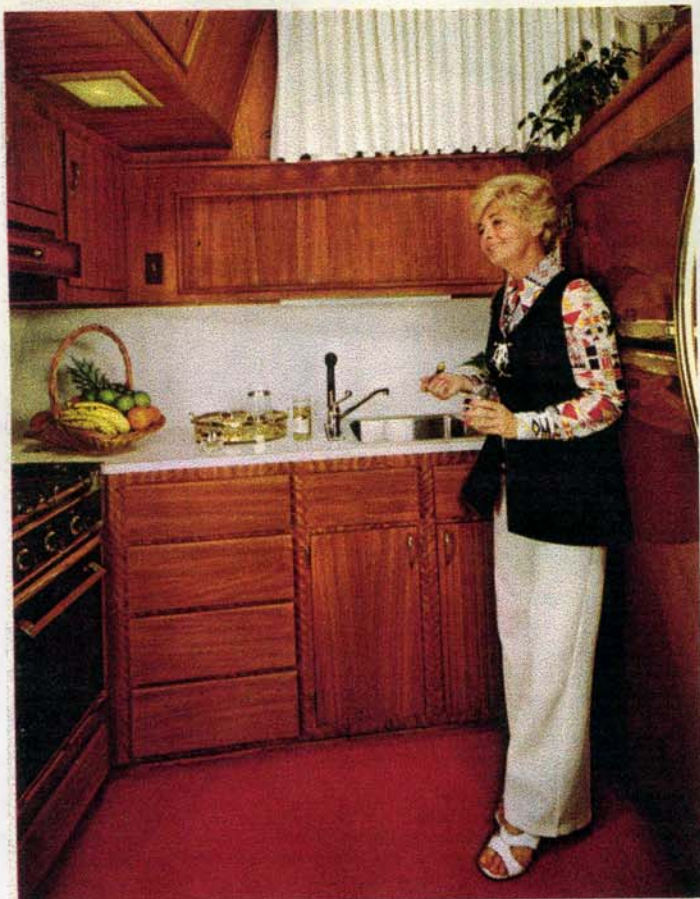
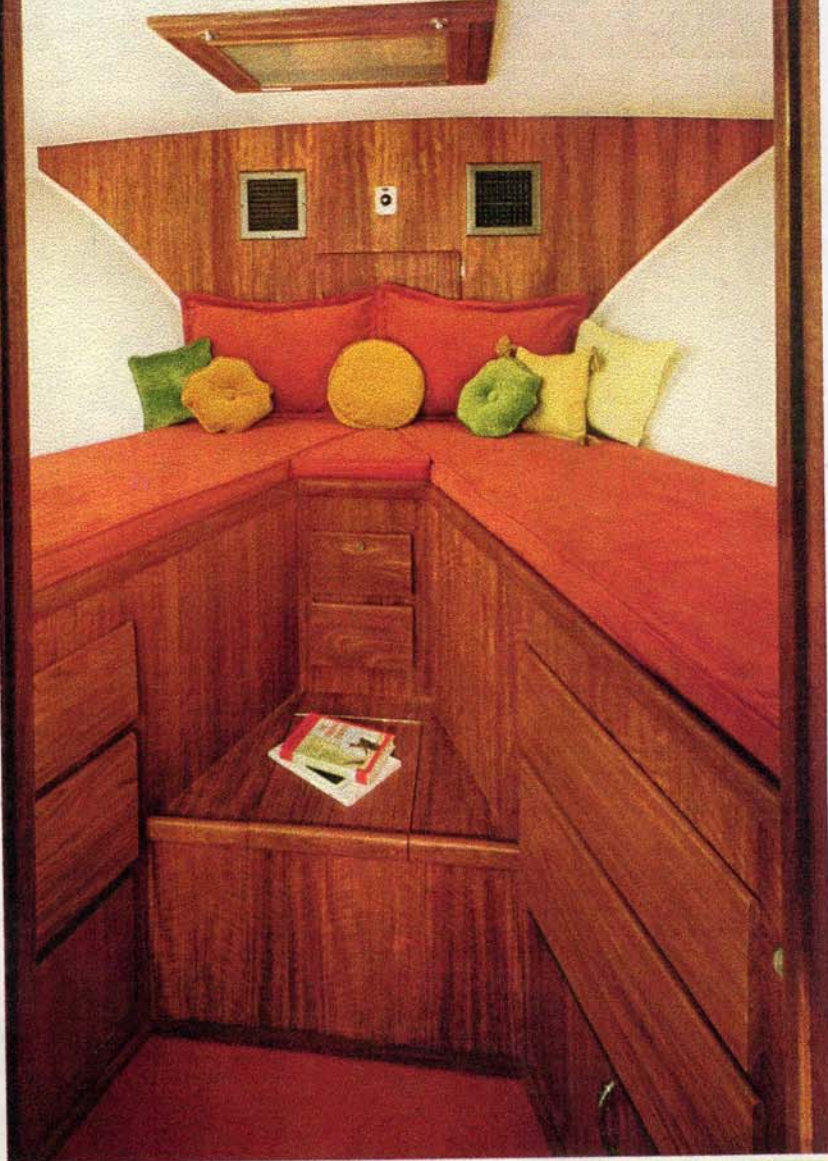
and in starboard bulkhead. Stereo tape player and speakers. 110 volt duplex outlets for accessories.

Entertainment center shown in photo in lower left corner has glass and bottle storage, an icemaker, also a sink with running water.

Carpeting is easily removed for access to engine room hatches. Recessed overhead lights. Width from window to window is 9'10" and the deck length from fore-and-aft bulkheads is 12'. The area above galley and over top of forward head adds greatly to the spaciousness of the salon.

Guest stateroom is in the bow, forward of the galley. It has fore-and-aft vee berths. Comfortable foam mattresses. Reading light over each berth. Ceiling light. Overhead screened hatch and screened portlight, port and starboard. Rope locker providing extra stowage. 19 cu. ft. hanging locker with shelf. On the locker door is a full length mirror. Storage space in drawers beneath berths, in vanity and in seat between berths is 7½ cu. ft. 110 volt duplex outlet. Vinyl flooring. Headroom 6'3".

Galley—it is just three steps down from the salon. In this position, the cook can enjoy talking with companions while attending to her cooking. It is an efficient, roomy galley with a 3-burner electric stove with oven and rotisserie. Over the oven is a hood with exhaust blower so kitchen odors cannot infiltrate the salon. There is a big 110 volt 14 cu. ft. refrigerator-freezer. Laminate counter top is 78 x 18 in. with a stainless steel sink and hot and cold running water; a recessed garbage container with top. Above the counter is a locker. In the base are 5 drawers and 2 other convenient lockers. Total storage area is 19 cu. ft. plus. Damp chaser is in locker. Vinyl flooring. Fluorescent light over counter. 110 volt duplex outlets for accessories.



Forward head, located on port side, has stall shower and exhaust blower. Vanity with lavatory has 4 cu. ft. of storage space beneath. Medicine cabinet has two shelves with a fluorescent light over mirror. 110 volt duplex outlet. Electric toilet.





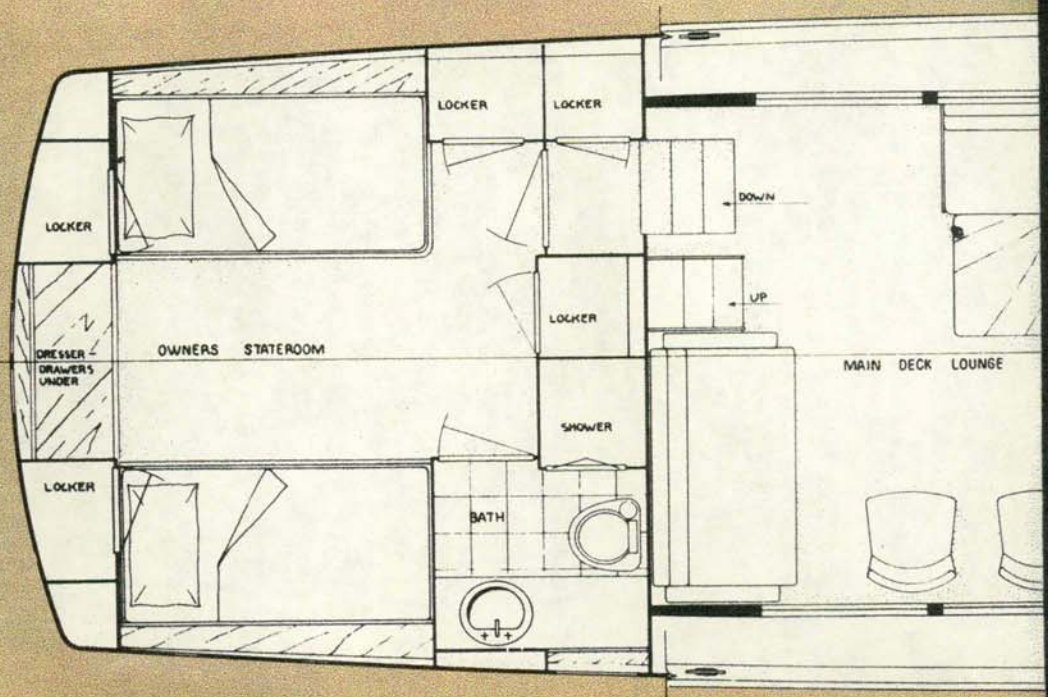
Master stateroom is aft, four steps down a companionway that has 2 lockers in the port bulkhead with 11½ cu. ft. of storage space.

The stateroom has spacious twin fore-and-aft berths. The built-in dresser with 6 drawers has 3½ cu. ft. storage space. Dresser top is 19 x 45 in. Screened portlights aft. A screened hatch overhead. 110 volt duplex outlets. Lockers in lazarette (port and starboard) have 11½ cu. ft. of storage space. Lockers in outer bulkhead above each berth have almost 3 cu. ft. combined for small articles, books, etc. Full-length hanging locker with mirror on door has 9½ cu. ft. storage space. Wall-to-wall carpeting. Overhead light and bullet lights over each berth. Screened portlights, port and starboard. Companionway door for privacy.

Master head has private entrance from stateroom. Built-in vanity has laminate top with lavatory. 110 volt duplex outlet. Storage space in vanity is 2¾ cu. ft. Mirrored medicine cabinet with fluorescent light. It has 2 shelves behind with space for toiletries. Screened portlight. Stall shower with exhaust blower. Overhead light. Electric toilet.

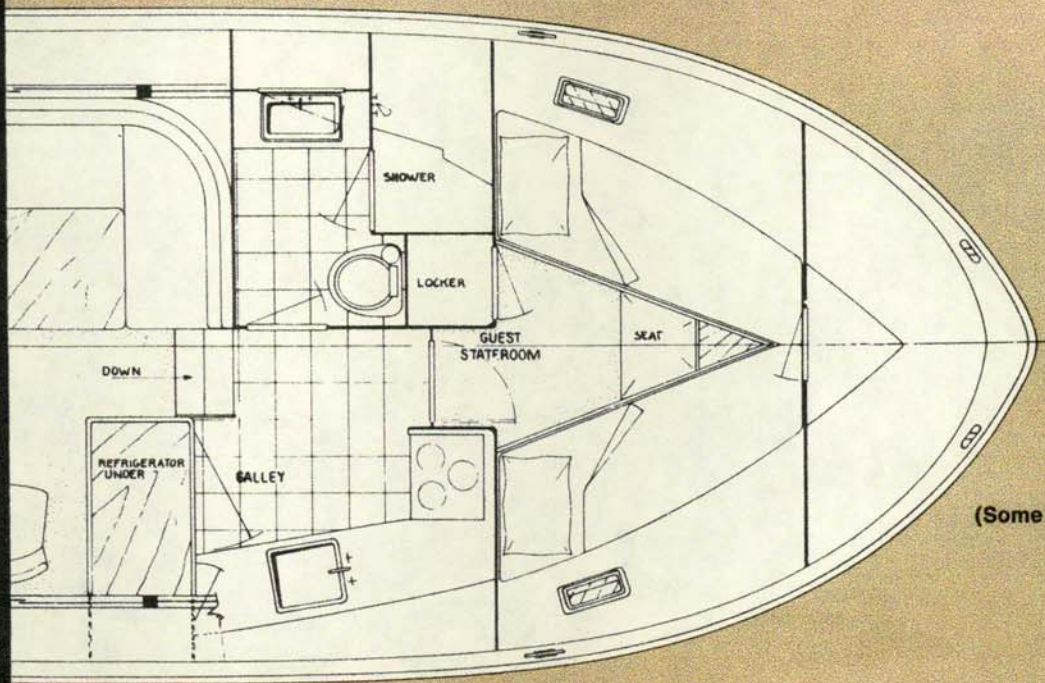


This view shows the attractive profile of the 43 Double Cabin, the Teak handrail. Mast is hinged for clearance. Weather cloth





The built-in forward seat accommodates up to six people. Note is a hard laminate for extra durability. Another Hatteras first.



(Some items optional)



This view of the Hatteras 43 Double Cabin enables you to see how the expanse of the aft deck with extended hard top and control station blends in the design of this sleek modern yacht.

Hatteras Yacht Division, North American Rockwell, High Point, North Carolina (27261), reserves the right to make styling, design and construction changes without notice. Also, prices subject to change without notice.



Hatteras Yacht Division
North American Rockwell