



AMF
Hatteras

42 Long Range Cruiser

FROM HERE

That's how far Hatteras quality can take you . . . in a very seaworthy, very comfortable 42 Long Range Cruiser.

Whether their waters are northern or southern, experienced open sea yachtsmen are quick to acknowledge

that boat quality bears directly on boating enjoyment.

And, more and more, they are following their hard-won knowledge to its logical conclusion . . . Hatteras® ownership.

The all fiberglass Hatteras 42 LRC gives greater cruising range than most ordinary trawler yachts, and then adds so much more. Like Hatteras Yachts' worldwide reputation for ruggedness, reliability and all-around



TO THERE

seacraftsmanship. And, like every yacht Hatteras has ever built, the 42 provides an extra dimension of comfortably luxurious interior layout, appointments and meticulous detailing. These make cruising or living aboard the 42 one of life's appreciated pleasures for experienced yachtsmen and their families.

The all fiberglass 42 is designed by naval architect Jack Hargrave to be an

efficient full displacement cruiser. With a fuel capacity of 755 gallons she can cruise over 1,000 miles on less than 5 gallons per hour. And her twin diesel engines (G.M. 4-53's) assure more dependable operation when you're hundreds of miles from home port.



THE UNCOMPROMISING CRUISER

The 42 Long Range Cruiser is a giant leap beyond any boat you might associate with the word "trawler".

And not by chance.

Hatteras has the industry's largest engineering staff dedicated to the innovation and refinement of

pleasure boats, their systems and components.

Their attention to detail is evident in every area of the 42 LRC.

Twin freshwater cooled G.M. 4-53 diesels with water separating fuel filters. Engine room automatic and remote fire extinguisher system. Superbly sound insulated 7.5 kw generator. AC and DC electrical systems throughout. Two isolated banks of heavy duty marine



FOR DEMANDING MARINERS

batteries with paralleling switch at each control station. Transformer connected 120 and 240 Volt shorelines to help protect the 42 from dockside power supply problems. Pressurized hot and cold water system. Stainless steel deck hardware.

From stem to stern, from keel to mast, every system is U.S. made. That's important when you need a

part in a hurry. And there's a broad network of Hatteras trained and Hatteras backed service facilities to keep the inconvenience and cost of downtime to a minimum.



△ Aft in the deckhouse is a U-shaped galley located so it won't interrupt traffic flow to the master stateroom's companionway.

◁ Main salon features open, airy design, quality craftsmanship, and a comfortable feeling of uncramped leisure. Electronics may be custom installed within easy reach above the helm station. As you step below, past the built-in convertible lounge, note the location for the optional washer/dryer, a real convenience on long cruises.



△ It's a galley for the live-aboard gourmet. Includes apartment-size upright refrigerator-freezer, three burner range with oven, and ample storage capacity for extended cruising.

EXPERIENCE THE PLEASURE

Carefully thought out naval engineering for exceptional handling and durability, components and systems designed for lasting value. Over 20 years of fiberglass boat building experience. Interior designed for easy comfort, both at sea and in port. All ingredients

that help the 42 LRC retain its value for years to come, and make your investment that much sounder.

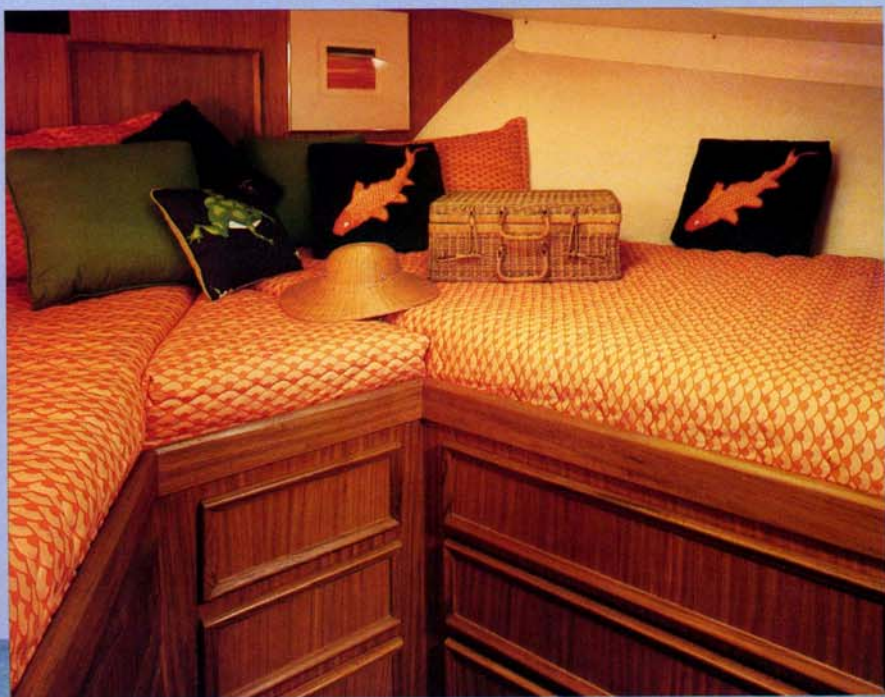
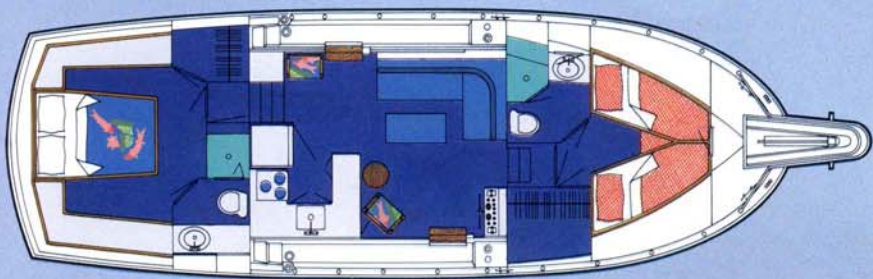
See the 42 Long Range Cruiser. Your Hatteras dealer can arrange a full-tour inspection for you and your family. When he does, you'll appreciate that there's a lot more than cruising range to long range cruising.



△ The master stateroom features a queen bed with ample walk around space and an abundance of storage.

◁ Twin berths are optional.

OF OWNING EXCELLENCE



△ Forward stateroom with 6' 6" long vee berths features spacious storage, including hanging locker and drawer storage.

▷ Both private heads include AC/DC lighting, exhaust blowers, electric toilets, large stall showers and mirrored wall cabinets.





AMF

Hatteras Yachts

High Point, North Carolina 27261 U.S.A.

42LRC 15 1280
Printed in U.S.A.

AMF Hatteras Yachts reserves the right to make styling, design, equipment and construction changes without notice. Also, prices are subject to change without notice. Some items shown may be optional. Hatteras is a registered trademark of AMF, Incorporated. © 1980 AMF Incorporated